

PART NO. AND CH. CODE	L ₄	H ₁	H ₂	W ₁	R ₁	W ₂	R ₂	WIRE SIZE (mm ²)
7116-4110-02. ㊦	16.60	△(2.45)	△(3.55)	2.30	0.45	2.80	0.45	△0.3~0.6 OR EQUIVALENT
7116-4111-02. ㊦	16.60	△(3.25)	△(4.45)	3.00	0.65	3.60	0.65	△0.75~1.25 OR EQUIVALENT
7116-4112-02. ㊦	16.60	△(4.00)	△(5.50)	3.70	0.85	4.60	0.90	△1.5~3.0 OR EQUIVALENT
△7116-4113-02	18.50	(5.40)	(7.05)	4.90	1.10	6.50	1.50	3.0~5.0 OR EQUIVALENT

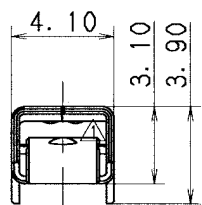
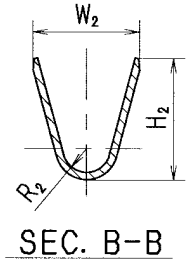
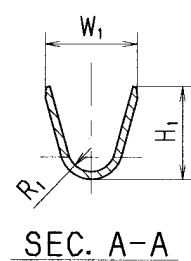
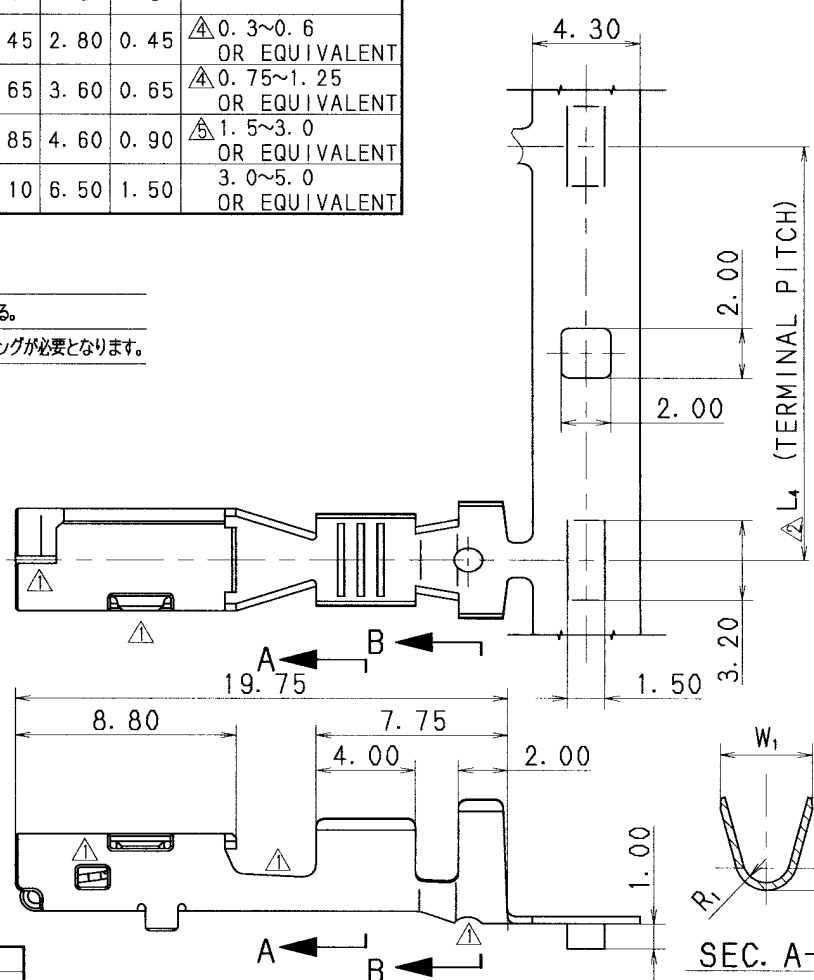
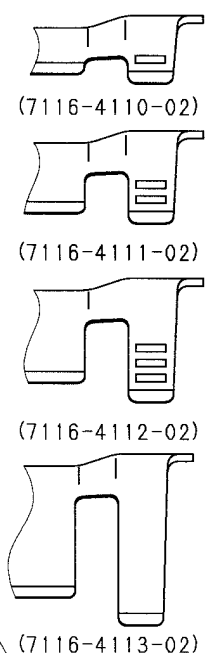
注記

- △ 1. 嵌合相手品番: 7114-4110-02 ETC.
- △ 2. 7116-4113-02 における通電電流値は、2.5 mm²電線相当以下とする。
- △ 3. 7116-4113-02 に 5 mm²電線を圧着して使用する場合には、専用ハウジングが必要となります。

NOTES

- △ 1. MATING PART NO. : 7114-4110-02 ETC.
- △ 2. CURRENT FOR 7116-4113-02 SHALL BE THE CURRENT FOR 2.5 mm² WIRE OR UNDER.
- △ 3. IN CASE 5 mm² WIRE IS CRIMPED WITH THE TERMINAL 7116-4113-02, SPECIAL HOUSING IS REQUIRED.

APPLICABLE WIRE SIZE MARK



△	07.06.04	CHANGED WIRE SIZE	C07-Z475	M. M			
△	03.07.10	CHANGED WIRE SIZE	C03-X452	K. O			
△	99.10.11	ADDED NOTE	C99-7134	T. S			
△	99.02.17	ADDED PART NO. ETC.	C99-L407	Y. U			
△	97.09.26	CHANGED FORM ETC. ㊦	C97-N033	H. K			
△	95.07.25	NEW	C95-M194	Y. U			
LET	DATE	REVISION RECORD	NO.	CHKD			
GENERAL TOLERANCE							
	10MAX	50MAX	100MAX	250MAX	2500VR	ANGLE	ECCENT
A	±0.15	±0.2	±0.3	±0.5	±0.75	±30'	0.1
B	±0.2	±0.3	±0.55	±0.95	±1.4	±30'	0.1
C	±0.3	±0.5	±0.8	±1.4	±2	±30'	0.15
SPECIFIED							MASS
							g

CUSTOMER		MATL. COPPER ALLOY t=0.3		TREAT.	
CUSTOMER PART NO.		SPEC. (TIN PLATING)		& FIN.	
OFFICE		NAME		△ 2.8 SYSTEM CONNECTOR	
VENDOR		TRIAL PART NO.		FEMALE TERMINAL	
VENDOR NO.		PART NO.		7116-4110-02 ETC.	
DWG TYPE		DWG SOURCE		CH. CODE	
R		NEW		7116-4110-02:R	
APPROVED		CHECKED		DWG NO.	
Y. UCHIDA		M. ADRIANO		7116-4110-02:R	
DESIGN		DRAWN		SET DWG NO.	
Y. UCHIDA		M. ADRIANO			
DATE		DATE		YAZAKI CORPORATION	
07.06.05		07.06.04			
07.06.04		95.05.31		07.06.04	

1

2

3