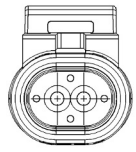
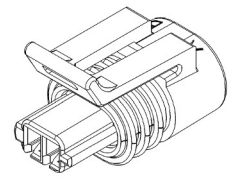
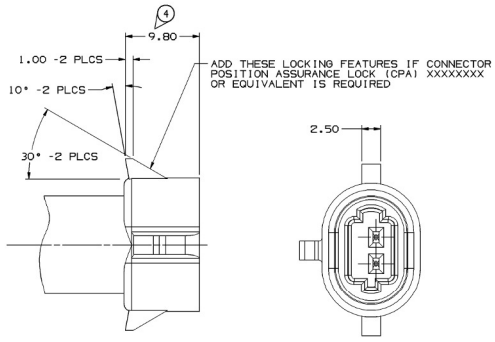
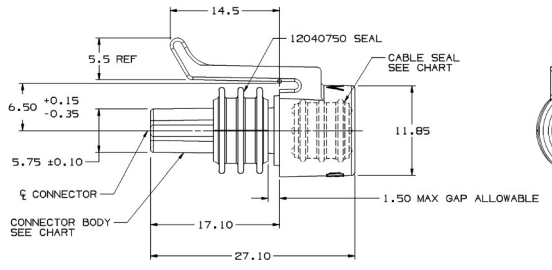
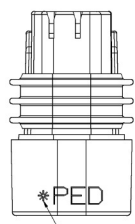
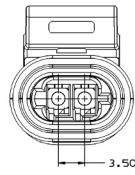
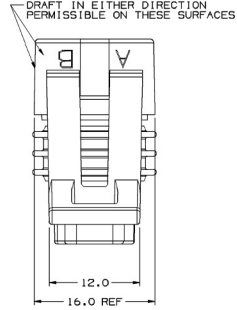


MATERIAL SPECIFICATIONS

RECOMMENDED
 BASE METAL - CDA-210, EXTRA SPRING TEMPER
 PLATING - 0.0050±0.0025 MM THICK TIN

MINIMUMS
 ELECTRICAL CONDUCTIVITY - ≥ 20% IACS AT 20°C. USE OF A MATERIAL WITH CONDUCTIVITY < 20% IACS MUST BE APPROVED BY PACKARD ELECTRIC MATERIALS ENGINEERING.
 TENSILE STRENGTH - 407 MPa
 PLATING - FOR LOW ENERGY (≤ 5V) AND NON-PASSENGER COMPARTMENT POWER CIRCUITS, 0.0050±0.0025 MM THICK TIN. FOR MATERIALS CONTAINING 10% OR MORE ZINC, AN UNDERPLATE OF COPPER 0.0050±0.0025 MM THICK IS REQUIRED.
 BLADE THICKNESS UNPLATE - 0.81±0.025
 TIN PLATE - 0.82±0.030

MATING BLADE INFORMATION
 SCALE B:1

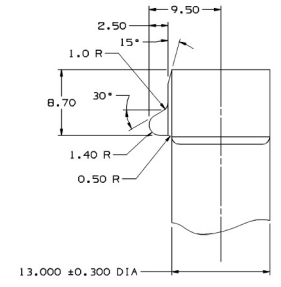
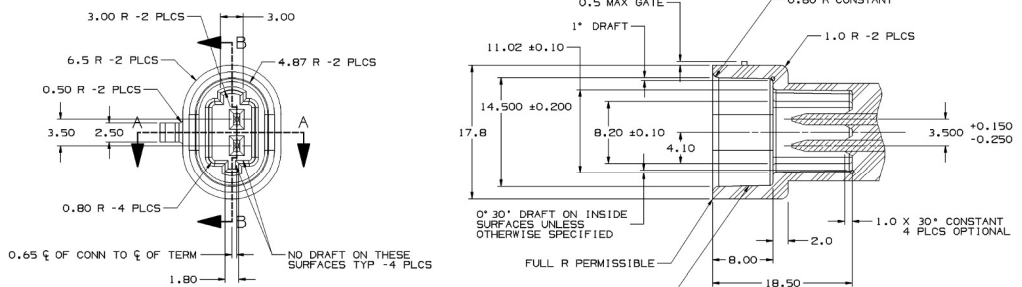
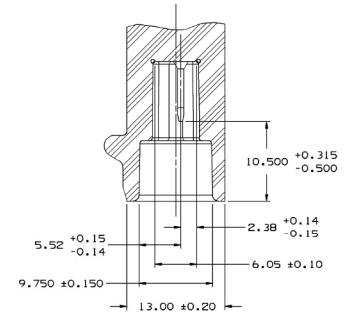


SNOWCONE CHARACTERISTICS

"O" DENOTES DIMENSIONS AND CHARACTERISTICS THAT ARE IMPORTANT TO THE FUNCTION AND/OR PROCESSING OF THE PART THAT HAVE SPECIAL ACCEPTANCE CRITERIA FOR PRODUCTION APPROVAL.	TOTAL ON DRAWING	4
	LAST NO. USED	4

REVISION RECORD

DATE	BY	REVISION	RECORD	AUTH	DR	CR
05AP97		ALL PARTS - REVISED				
05AP97		NO REV UPDATE REQ'D	178177	JHP/KV		
05AP97		15326143 - RELEASED TO REV "A"				
03JA14		ALL PARTS - ADDED	970005	JHP/KV		
		LUBEWELL LUBRICANT NOTE #24986	JHP/KV			



MATING CONNECTOR INFORMATION

- NOTES:
- UNLESS OTHERWISE SPECIFIED AND/OR INDICATED: DIMENSIONS ARE TO FACE OF VIEW SHOWN AND AUTOMATICALLY ROUNDED BY COMPUTER FOR INSPECTION. (SEE MATH MODEL FOR PRECISE DIMENSION) FOR ALL OTHER DIMENSIONS NOT SHOWN BUT REQUIRED FOR TOOL BUILD, SEE MATH MODEL FOR PRECISE TOOL PATH DATA. CAVITIES ARE IDENTICAL.
 - MATING COMPONENTS: CONNECTOR 12041409 OR EQUIVALENT TERMINAL 12124075 OR EQUIVALENT
 - WHEN PARTS ARE SHIPPED, THEY MUST BE PACKED IN PLASTIC BAGS OR SHIPPING CONTAINERS MUST BE LINED WITH PLASTIC LINERS BAGS OR LINERS MUST BE SEALED TO AVOID ENTRY OF FOREIGN MATTER
 - FOR LEAD LENGTH CALCULATIONS, DISTANCE FROM MATING END OF CONNECTOR TO FRONT OF CABLE CORE IS 8.60 ± 1.55
 - SEALING CODE 3

DESIGN WILL PASS SALT FOG AND IMMERSION TEST AFTER CONDITIONING AS SPECIFIED IN ESA-644 (WEATHER-PACK) ESA-710 (METRI-PACK) ESA-650 (UNDERHOOD MICRO-PACK) C-4006 (WORLD CONNECTOR) ETC. - WHEN MATED TO MATING PART OR EQUIVALENT

- DIMENSIONS MARKED "REF" ARE FOR REFERENCE ONLY AND NO TOLERANCE LIMITS ARE ESTABLISHED
- S-40-T LUBEWELL LUBRICANT CAN BE USED AS AN AUXILIARY SUPPORT ON THE CABLE INSTALLATION PROCESS.

15326143	A1	15326141	BLACK	12040750	BLUE	12040751	GREEN
12162199	A1	12162196	MD GRAY	12040750	BLUE	12110169	LT GRN
12162198	A1	12162196	MD GRAY	12040750	BLUE	12078083	TAN
12162197	A1	12162196	MD GRAY	12040750	BLUE	12040751	GREEN

ASM	REV	PART NO	COLOR	PART NO	COLOR	PART NO	COLOR
		CONNECTOR		CONNECTOR SEAL		CABLE SEAL	

PART NO 1216 2265

PART NO 1216 2265

OTHER DRAWINGS AVAILABLE

Metric

THIRD ANGLE PROJECTION

DATE TO: 6900
 DATE: 07FE94
 REFERENCE TO: 411

DESIGNER: E. BEILSTEIN
 CHECKER: E. BEILSTEIN
 APPROVED: J. YUMER

MATERIAL SPEC: SEE DRAWING

NOTE: TAXI ASM CONN 2F M/P 150.2 P25

PART NUMBER: 1216 2265

SIZE: A0