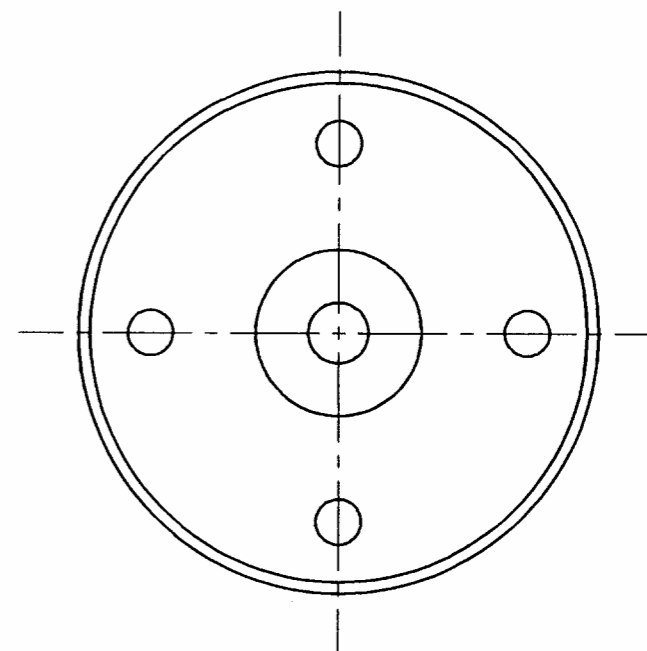
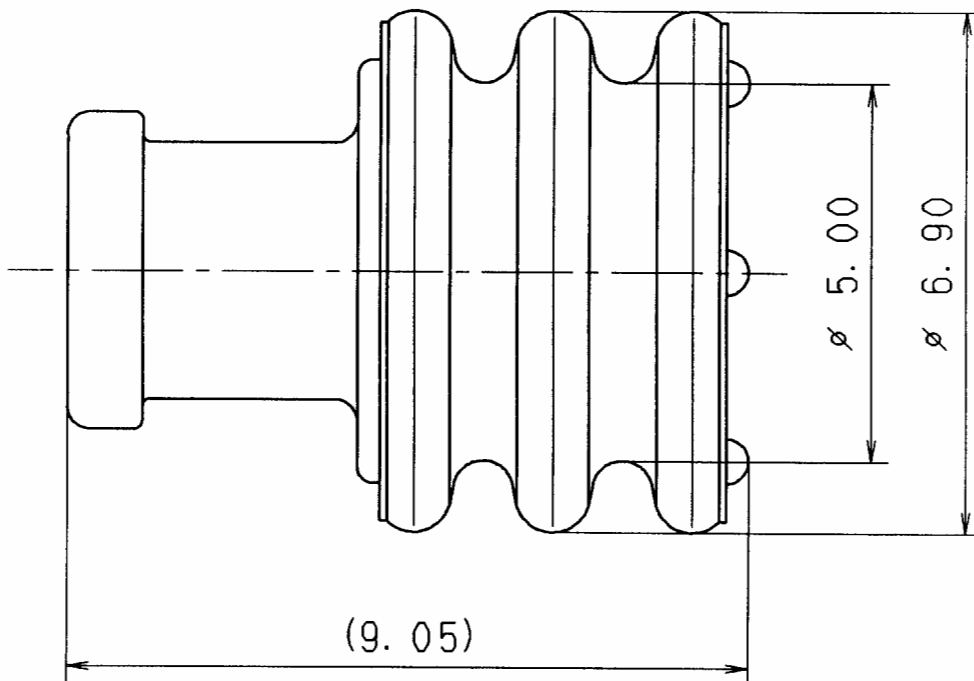
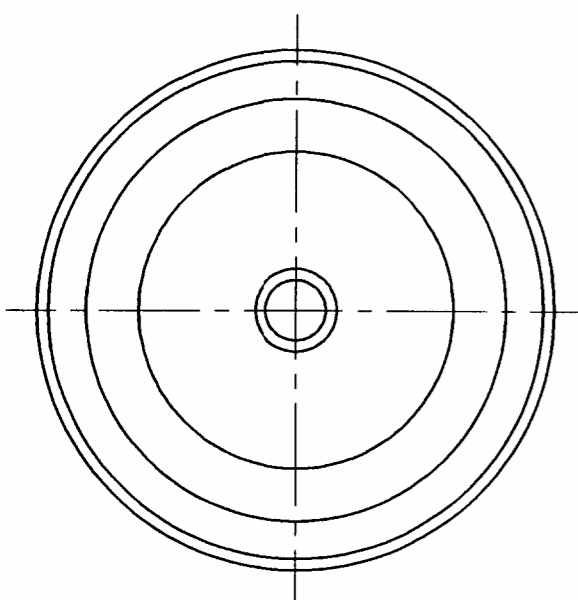


PART NUMBER	MATERIAL	COLOUR	WIRE O. D.
7158-3111-60	SILICONE RUBBER	GREEN (RAL 6010)	1.2 ~ 1.9mm
7158-3112-70	SILICONE RUBBER	YELLOW (RAL 1006)	1.8 ~ 2.3mm
7158-3113-40	SILICONE RUBBER	WHITE (RAL 9010)	2.1 ~ 3.0mm

NOTES

1. APPLICABLE TERMINALS: 7114-4150-02 etc.  
7116-4150-02 etc.
2. APPLICABLE FOR CAVITY DIAMETER 6.10mm.
3. RUBBER PARTS GENERAL TOLERANCE  $\pm 0.2$ mm.



ISSUE MARK

										CUSTOMER			MATL. SPEC.		TREAT. & FIN.	
										CUSTOMER PART NO.			CUSTOMER DWG NO.			
										OFFICE YKE			TRIAL PART NO.		NAME 2.8 SEALED SYSTEM CONNECTOR	
										VENDOR			7F9457-9338 etc.		WIRE SEAL	
										VENDOR NO.						
										DWG TYPE			DWG SOURCE		PART NO.	
										R			NEW		7158-3111-60 etc.	
										DWG DATE			UNIT		CH. CODE	
										99/02/22			mm		7158-3111-60:R	
										APPROVED			CHECKED		DWG NO.	
										<i>[Signature]</i>			<i>[Signature]</i>		7158-3111-60:R	
										IWAHORI			NOETHEN		YAZAKI CORPORATION	
										99.02.23			99.2.23		99/02/23	
										96/05/21			99/02/22			

GENERAL TOLERANCE							
	10MAX	50MAX	100MAX	250MAX	2500VR	ANGLE	ECCENT
A	$\pm 0.15$	$\pm 0.2$	$\pm 0.3$	$\pm 0.5$	$\pm 0.75$	$\pm 30'$	0.1
B	$\pm 0.2$	$\pm 0.3$	$\pm 0.55$	$\pm 0.95$	$\pm 1.4$	$\pm 30'$	0.1
©	$\pm 0.3$	$\pm 0.5$	$\pm 0.8$	$\pm 1.4$	$\pm 2$	$\pm 30'$	0.15
SPECIFIED							MASS
							9