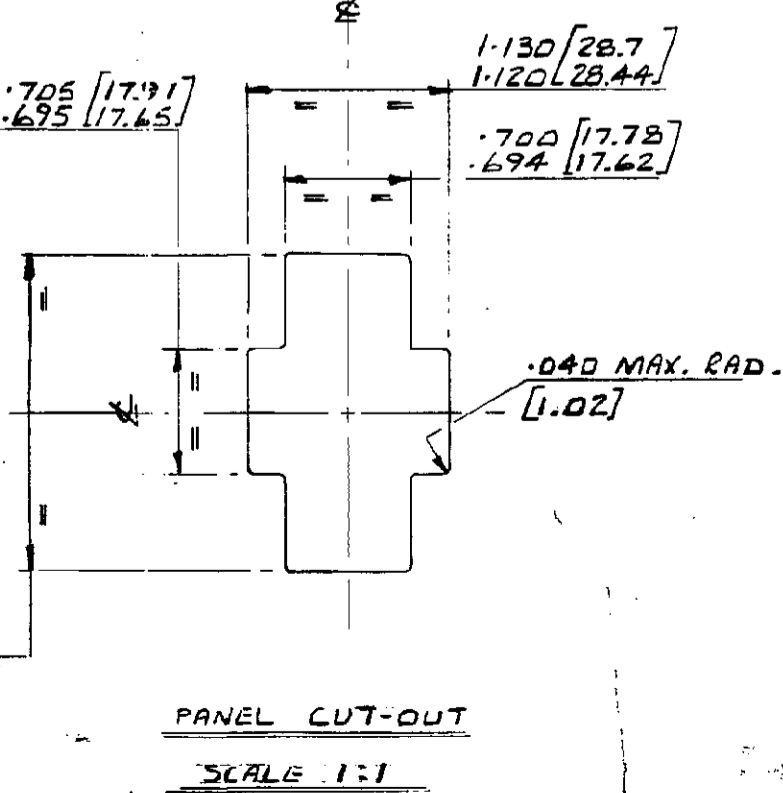
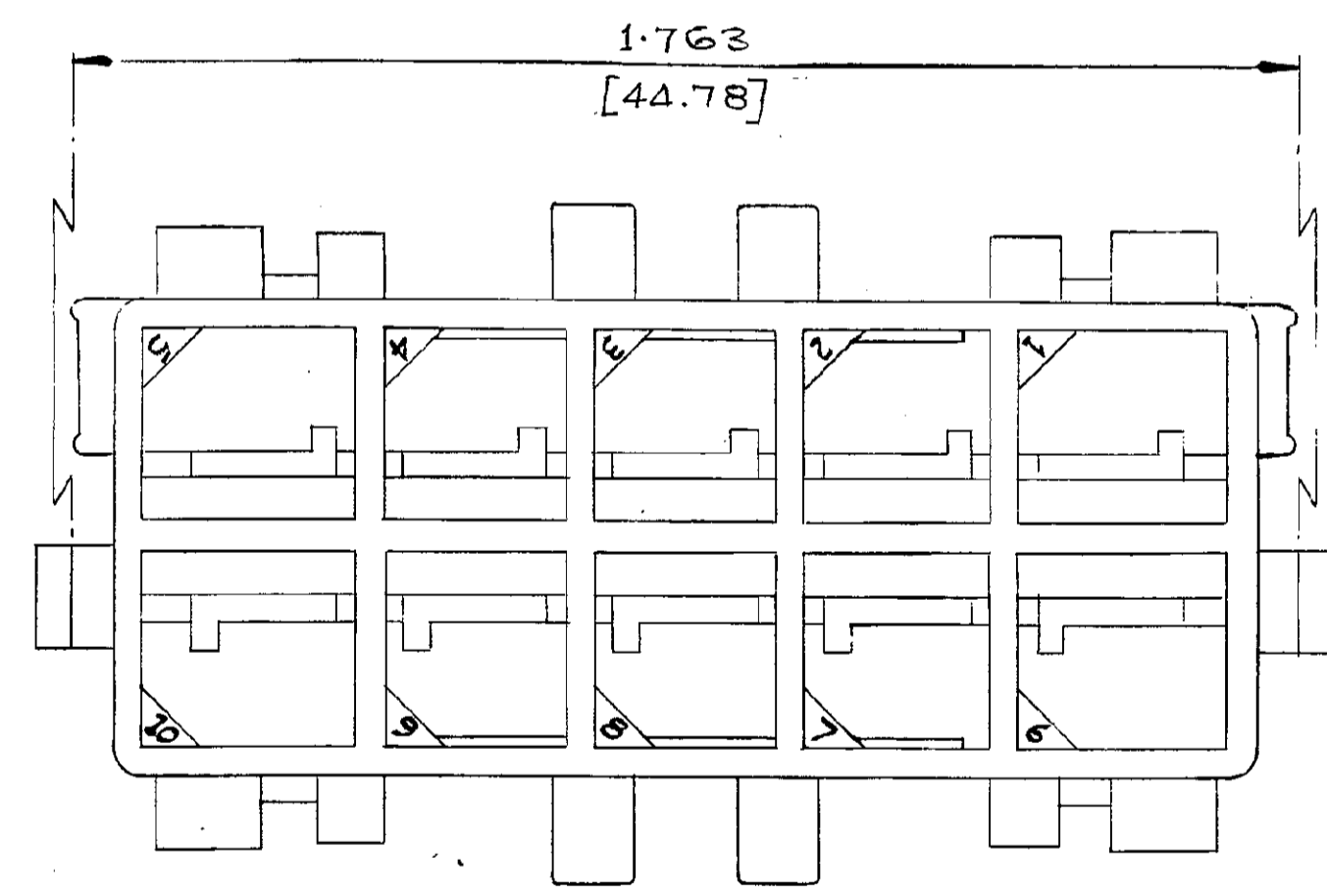
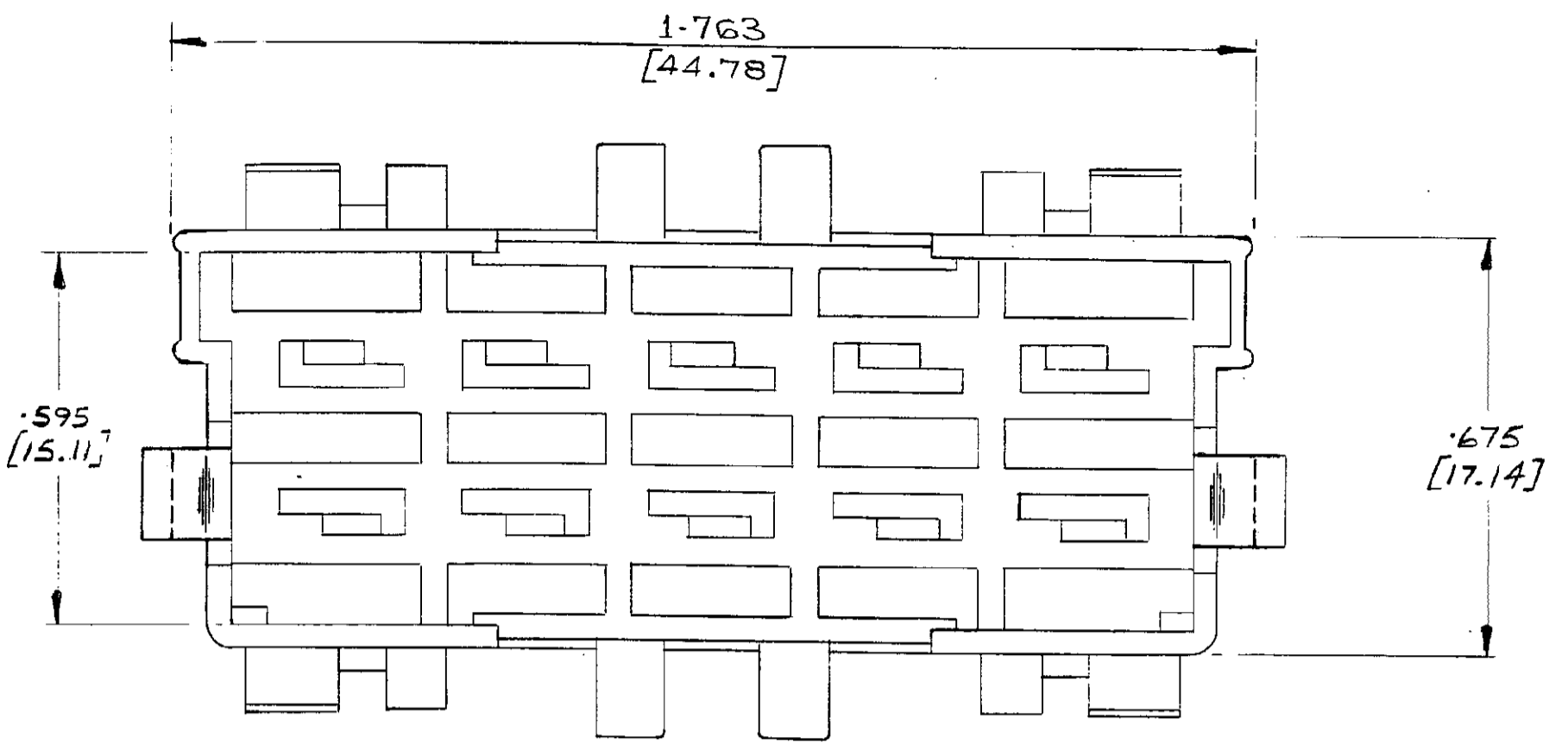
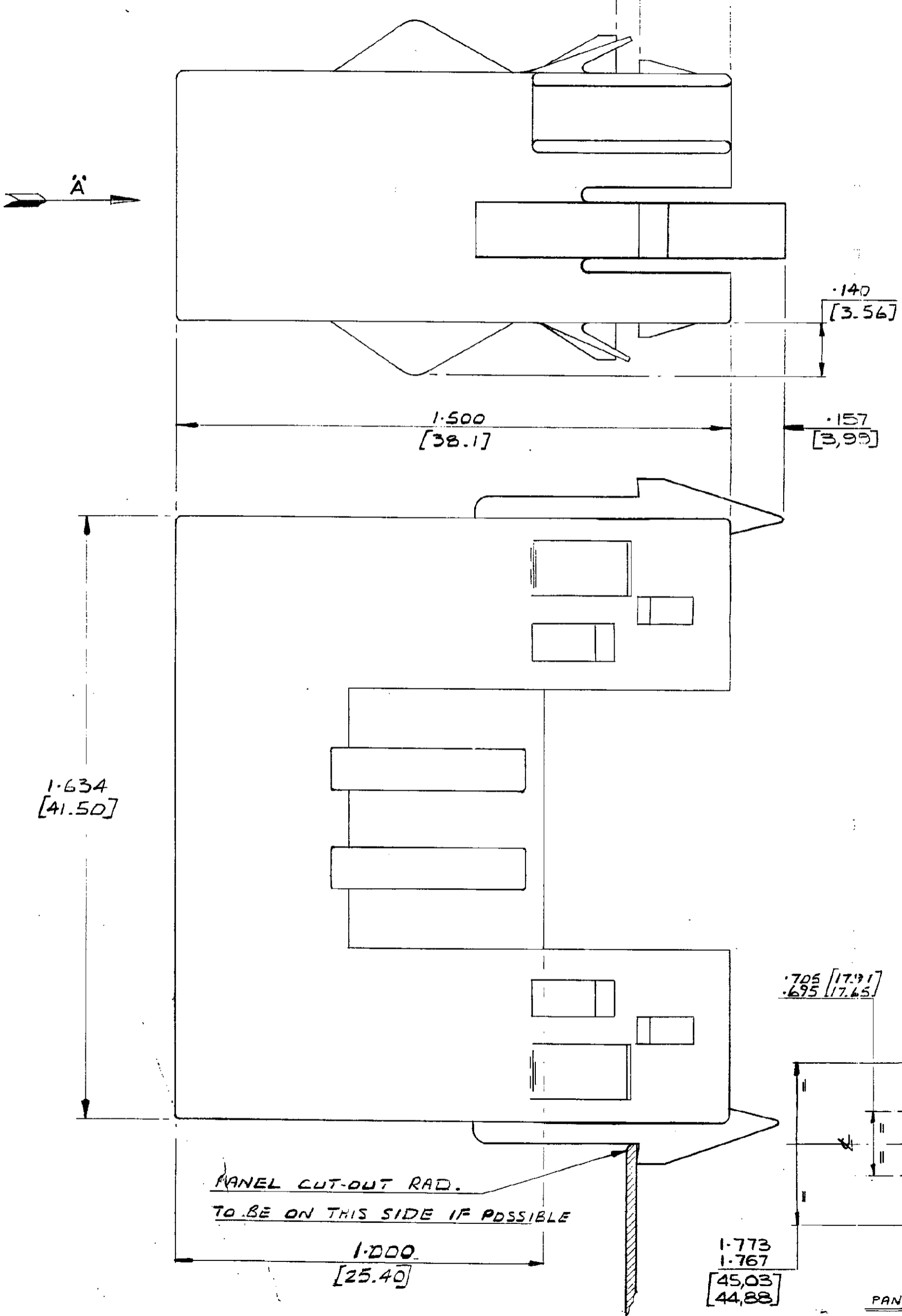


NUMBER C154979

PANEL RANGE
22 SWG (.028) TO 16 SWG (.064)
[0.71] [1.63] [6.35]



VIEW IN DIRECTION
OF ARROW 'A'

M	EB00-0311-00	PB	-	6.00
K	MODIFIED LEAD-IN TO PANEL MOUNTING HOOKS	CB	-	2.25
J	PANEL MOUNTING HOOKS LENGTHENED	CB	-	16.25
H	PANEL MOUNTING HOOKS MODIFIED	CB	-	23.84
G	PANEL CLIP SLOTS RECTIFIED	1/2" S.	-	8.175
F	PICTORIAL CHANGE	DC	-	1.112
E	MATE WAS MAKE	DR	-	1.778
D	1.763 DIM. WAS 1.755 (2 PLACES)	KS	-	2.60
C	1.000 WAS 1.120	264	-	1.770
B	FINISH TABLE ADDED	DR	-	1.770
A	PANEL LATCH MOD. PICT.	262	-	1.420
0	RELEASED FOR PROD.	AKL	-	2.175

154979-9	BLACK
-8	GREY
-7	VIOLET
-6	BLUE
-5	GREEN
-4	YELLOW
-3	ORANGE
-2	RED
-1	BROWN
154979-0	NATURAL
PART N°	FINISH

AMP of Great Britain Ltd 1975

MATERIAL AND FINISH: NYLON 6.6

CLASS: SEE TABLE

WIRE - RANGE - INSULATION: TYPE

SCALE: 4:1

LOC: E

NO: C-154979

REV: M

NAME: 10 WAY POSITIVE MATE TAB HOUSING (PANEL MOUNT)

PRINT DIST.