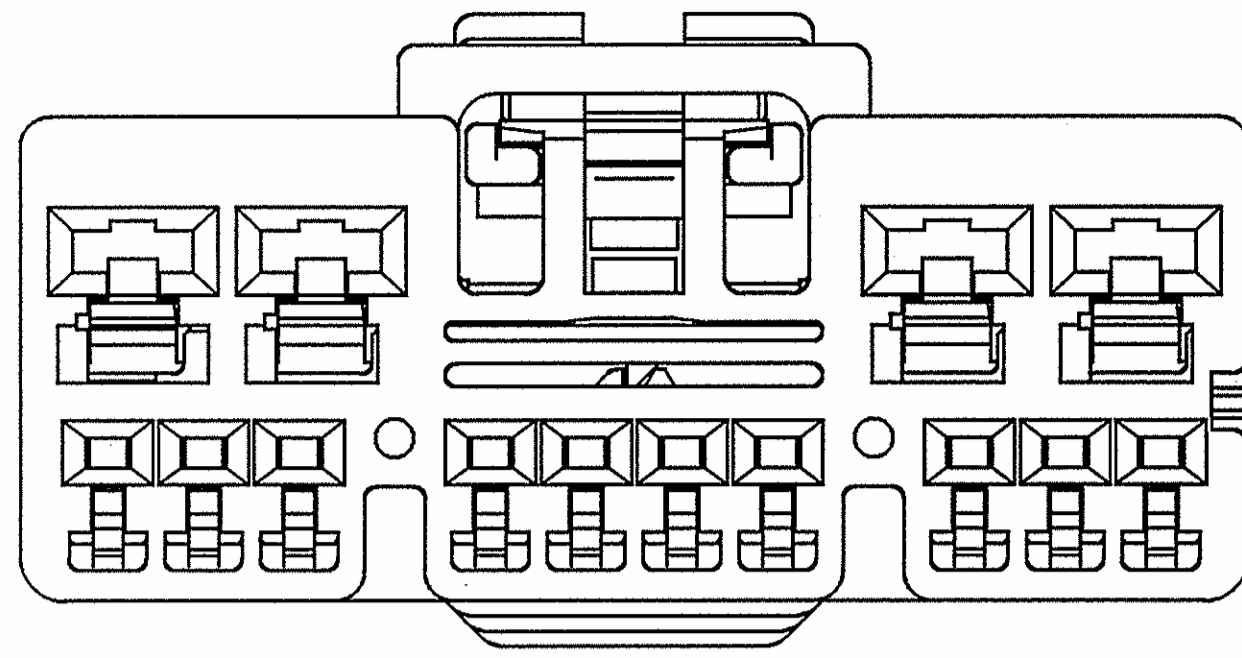
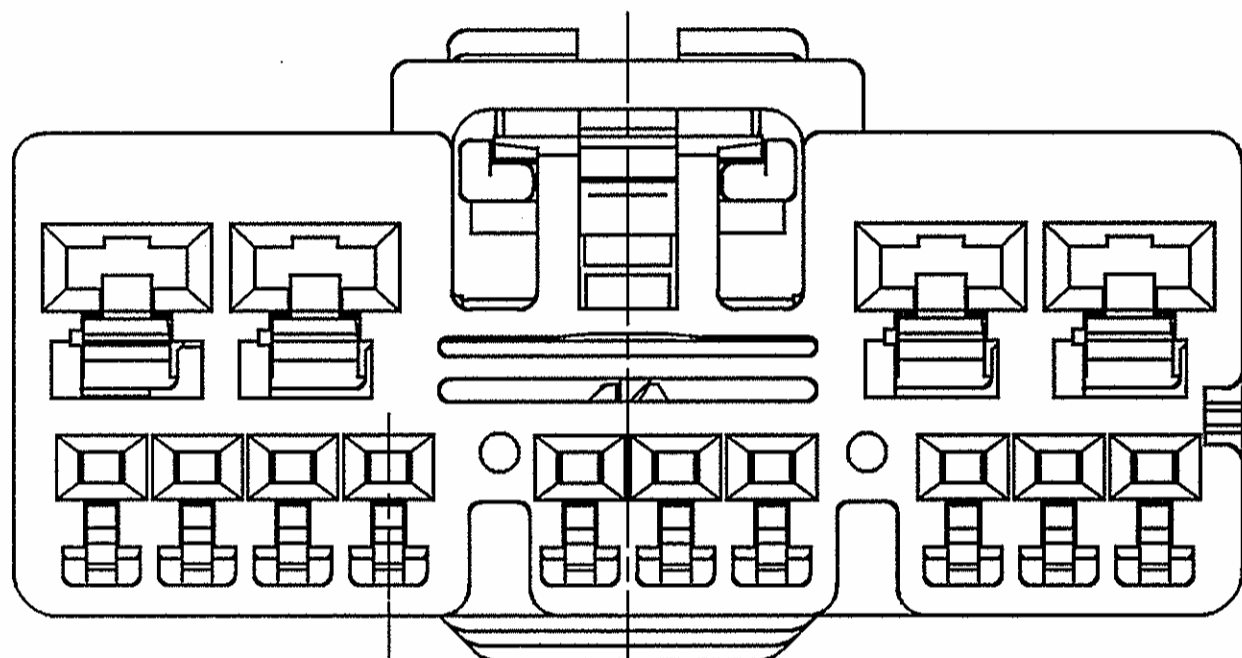


(5/1)

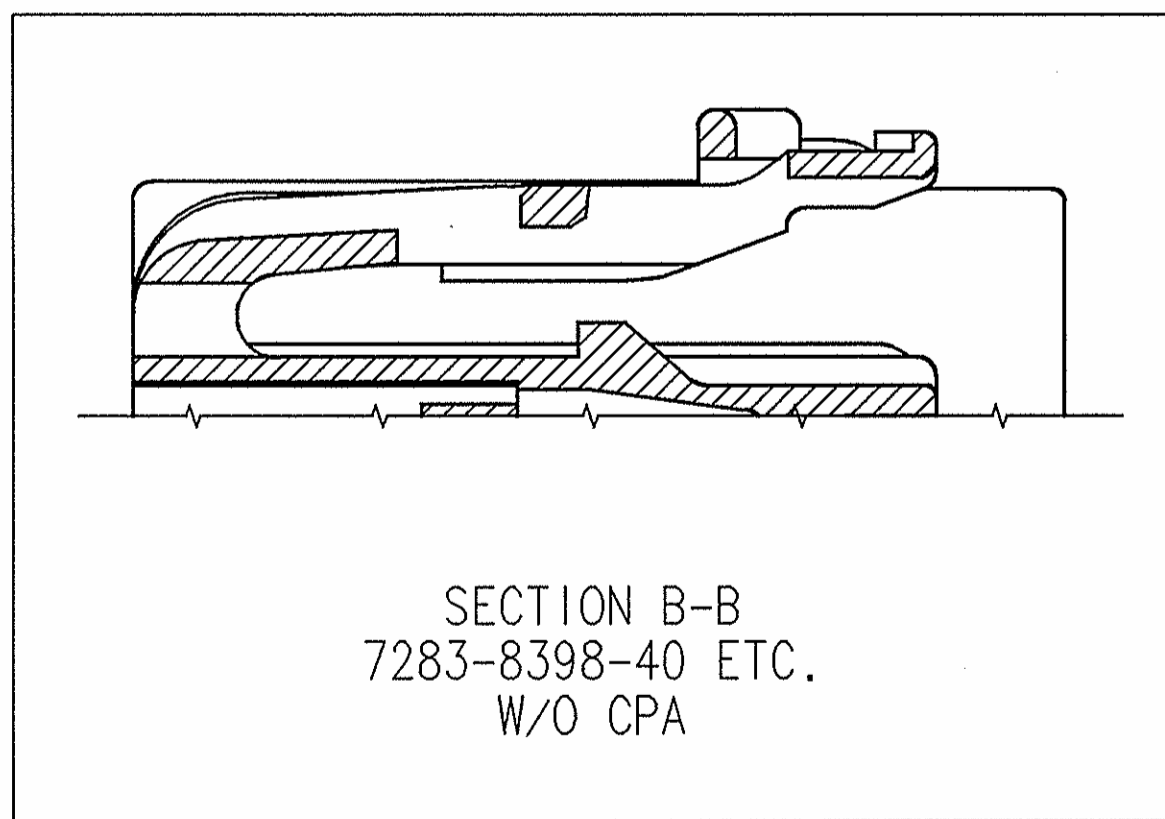


7283-8397-40
KEYWAY A
(AS SHOWN)

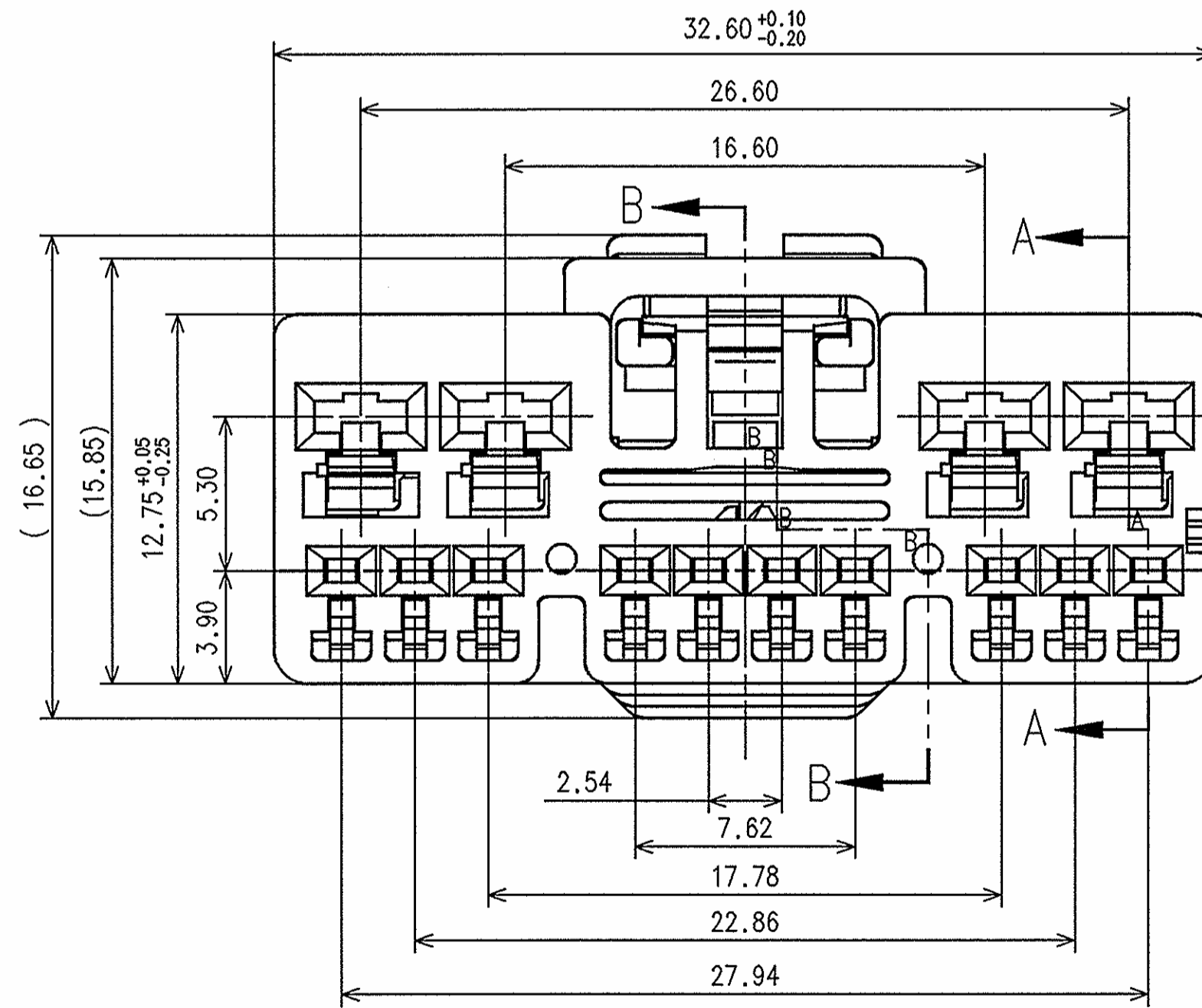
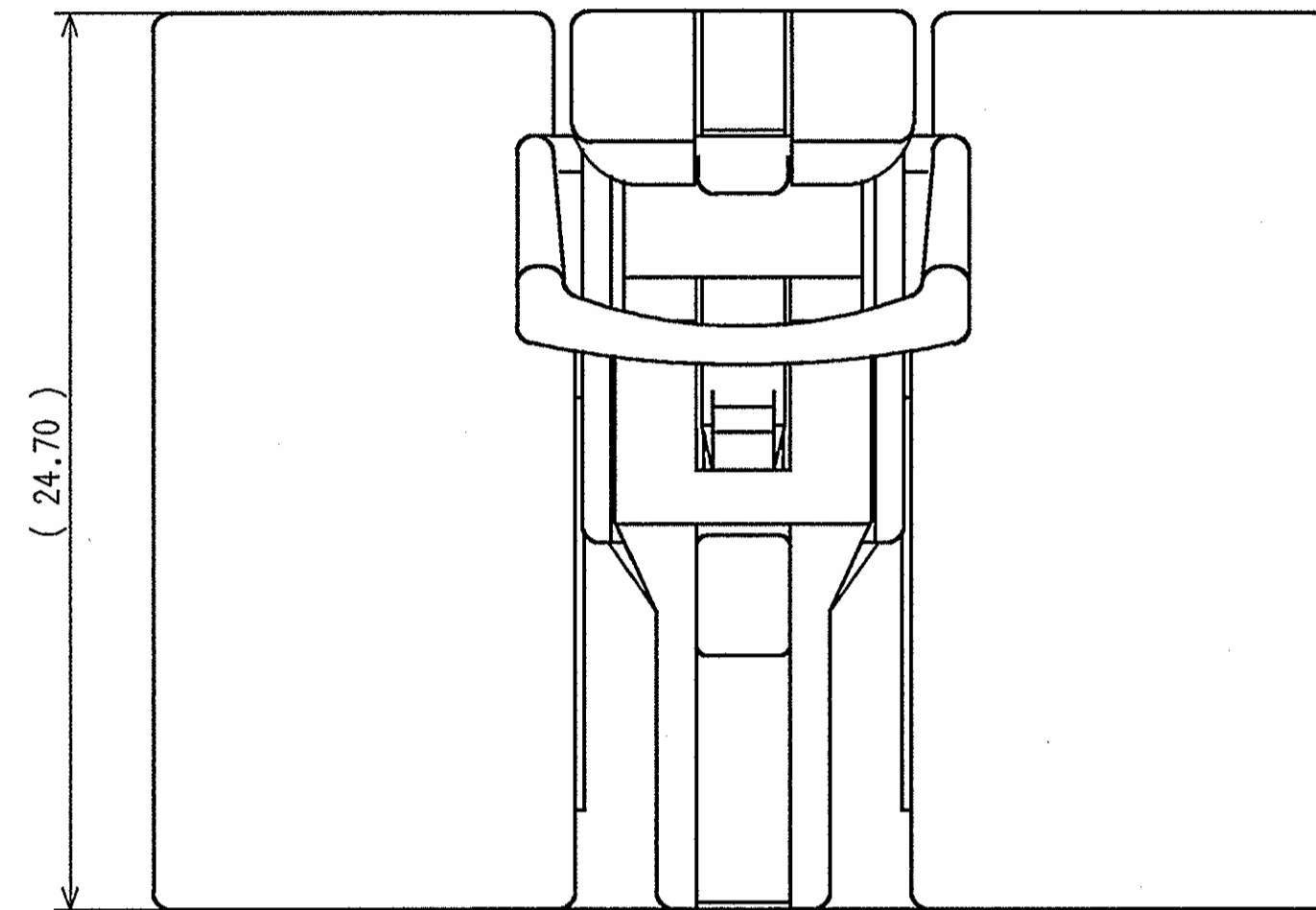
(5/1)



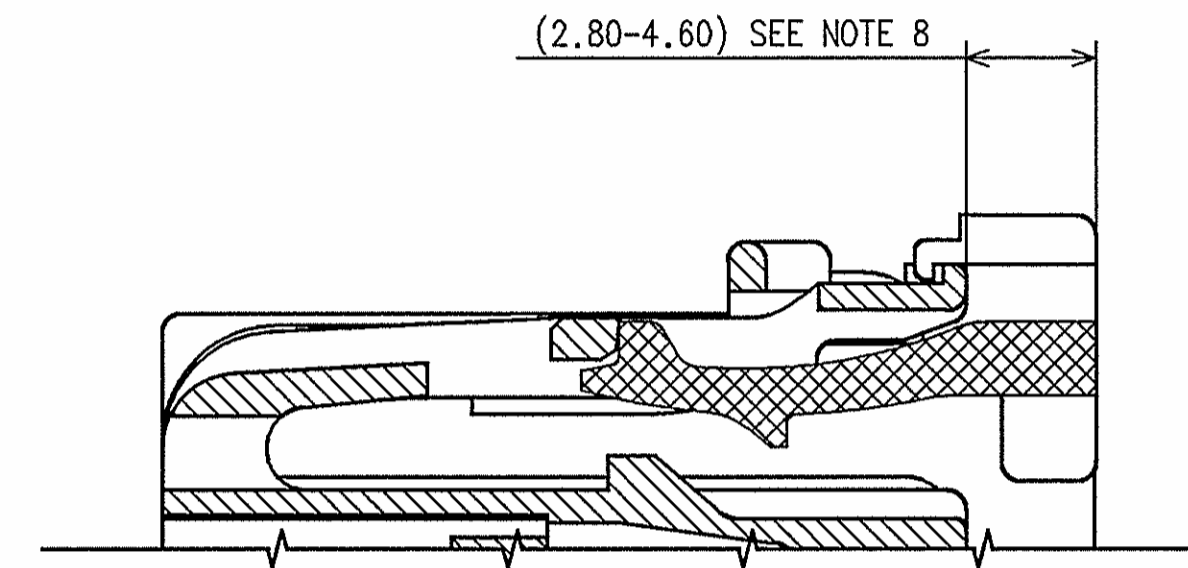
7283-3698-30
KEYWAY B



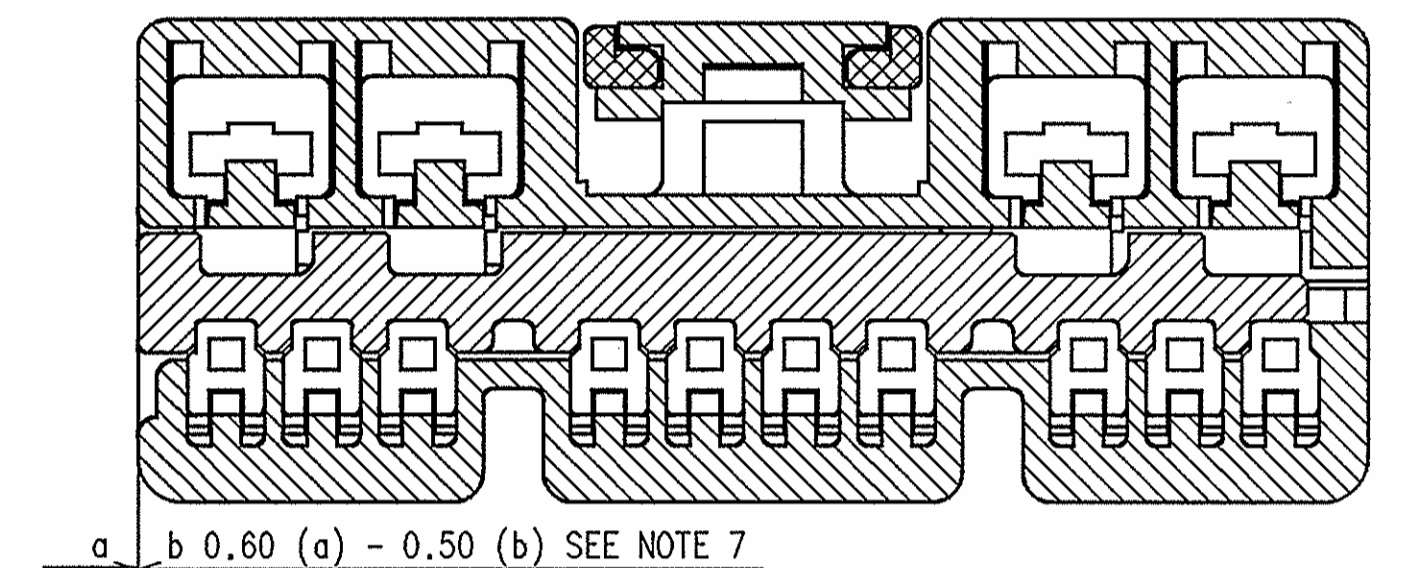
SECTION B-B
7283-8398-40 ETC.
W/O CPA



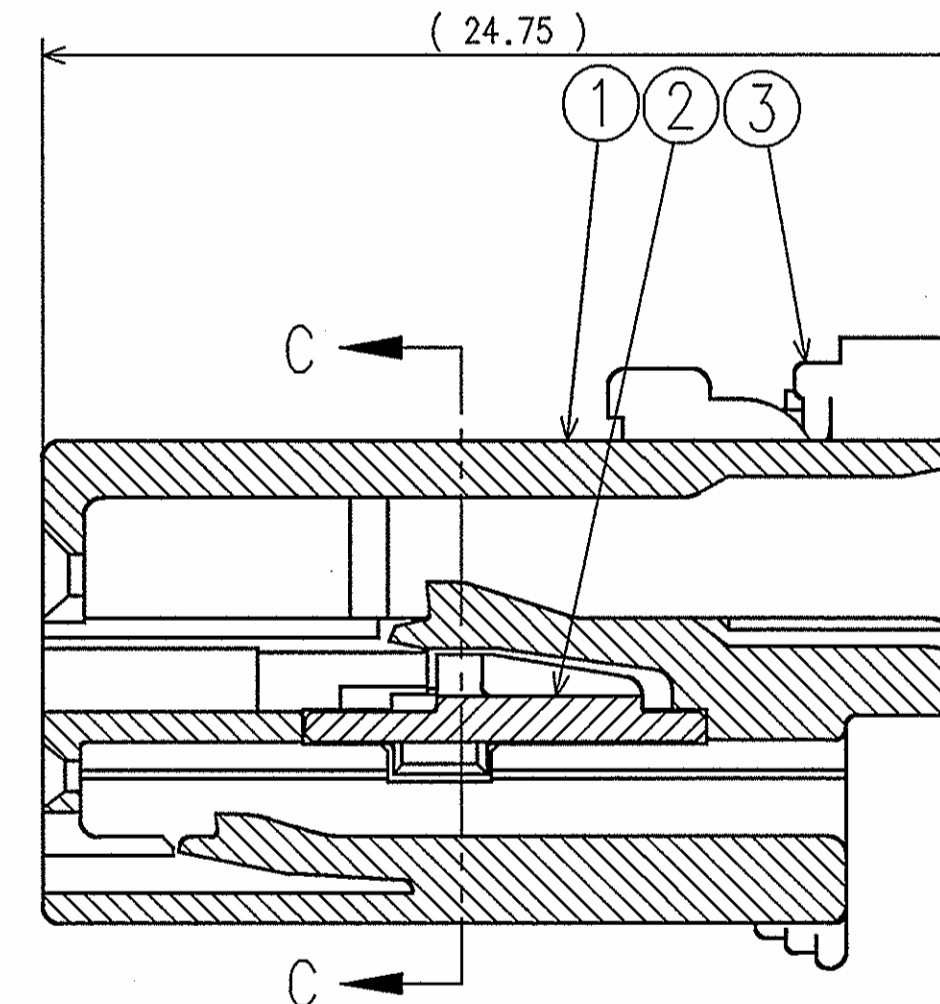
SUB ASSEMBLY PART NUMBER	NO.	PART NUMBER	PART NAME	MATERIAL	COLOR	QUANTITY
7283-8397-40	①	7183-8396-40	14P (10P 0.64 + 4P 2.80) YESC UNSEALED FEMALE HOUSING	PBT + GF	LIGHT GRAY	1
	②	7158-5838-90	14P (10P 0.64 + 4P 2.80) YESC UNSEALED FEMALE SIDE SPACER	PBT + GF	BLUE	1
	③	7158-8088-50	0.64 SYSTEM UNSEALED CPA	PBT + GF	RED	1
7283-8398-40	①	7183-8396-40	14P (10P 0.64 + 4P 2.80) YESC UNSEALED FEMALE HOUSING	PBT + GF	LIGHT GRAY	1
	②	7158-5838-90	14P (10P 0.64 + 4P 2.80) YESC UNSEALED FEMALE SIDE SPACER	PBT + GF	BLUE	1
	③	7158-8088-50	0.64 SYSTEM UNSEALED CPA	PBT + GF	RED	1
7283-3698-30	①	7183-8599-30	14P (10P 0.64 + 4P 2.80) YESC UNSEALED FEMALE HOUSING	PBT + GF	BLACK	1
	②	7158-5834-70	14P (10P 0.64 + 4P 2.80) YESC UNSEALED FEMALE SIDE SPACER	PBT + GF	YELLOW	1
	③	7158-8088-50	0.64 SYSTEM UNSEALED CPA	PBT + GF	RED	1
7283-8599-30	①	7183-8599-30	14P (10P 0.64 + 4P 2.80) YESC UNSEALED FEMALE HOUSING	PBT + GF	BLACK	1
	②	7158-5834-70	14P (10P 0.64 + 4P 2.80) YESC UNSEALED FEMALE SIDE SPACER	PBT + GF	YELLOW	1



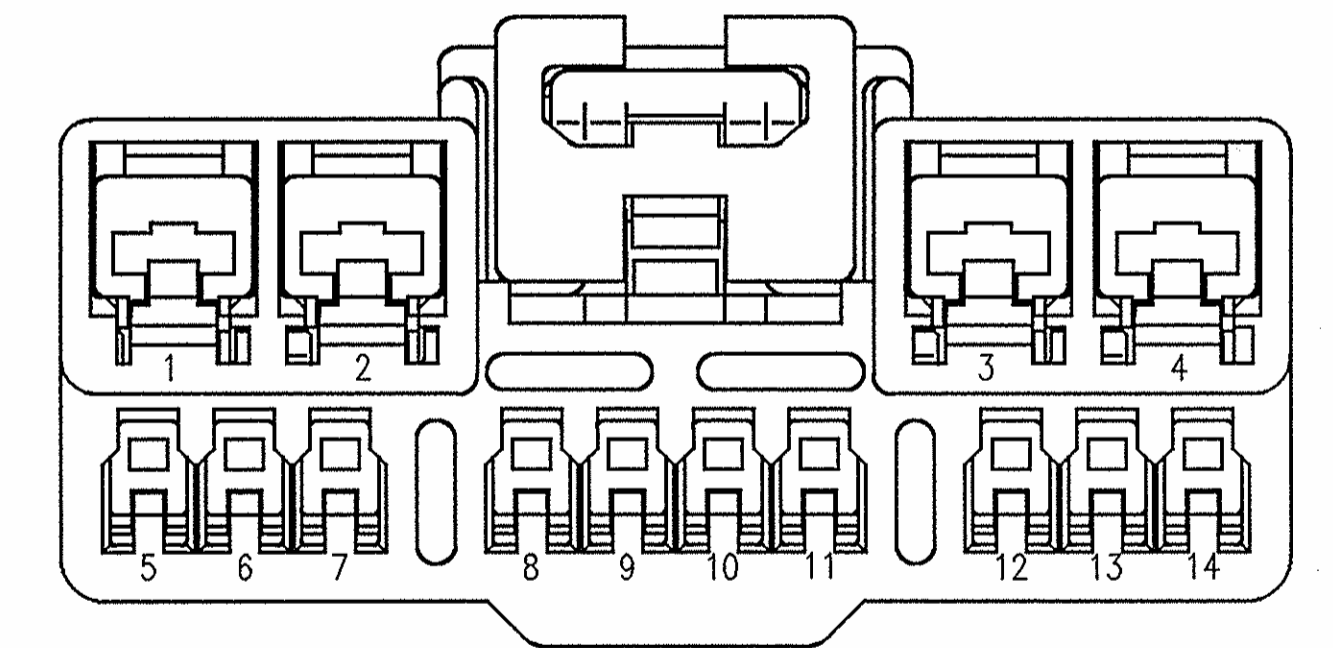
SECTION B-B



SECTION C-C



SECTION A-A



- NOTES:
- PARTS MUST BE PURCHASED FROM YAZAKI.
 - PARTS MUST BE FREE OF FLASH AND IMPERFECTIONS THAT AFFECT FUNCTION.
 - APPLICABLE TERMINAL NUMBER: SEE 7116-4720-02:R DRAWING (0.64 SYSTEM) SEE 7116-4110-02:R DRAWING (2.8 SYSTEM)
 - MATING PART NUMBER: A KEYWAY 7282-8395-40, 7382-8397-40 B KEYWAY 7382-3698-30
 - PART DESIGNED TO SATISFY USCAR-2, REVISION 3. DATED APRIL 2001, CLASS 2 WITH THE FOLLOWING EXCEPTION:
 - A. SECTION 5.4.2 LOCK DEFLECTION FORCE.
 - PART TO COMPLY WITH YPES-31-038 REQUIREMENTS.
 - THIS DIMENSION SHOWS THE POSITION OF THE SIDE SPACER ON THE SUB ASSEMBLY.
 - THIS DIMENSION SHOWS THE POSITION OF THE CPA ON THE SUB ASSEMBLY.
 - THIS DRAWING IS TO BE USED FOR INTERNAL YAZAKI PSW SUBMISSION.

CUSTOMER	CUSTOMER PART NO.	CUSTOMER DWG NO.	MATL. SPEC.	SEE TABLE	TREAT. & FIN.	ISSUE MARK
OFFICE	YNA	TRIAL PART NO.	NAME	14P (10P 0.64 + 4P 2.8) YESC UNSEALED FEMALE SUB ASSEMBLY		
VENDOR	VENDOR NO.		PART NO.	7283-8397-40 ETC.		
GENERAL TOLERANCE			DWG NO.	7283-8397-40:R		
SPECIFIED			YAZAKI CORPORATION			

	10MAX	50MAX	100MAX	1250MAX	2500VR	ANGLE	ECCENT	DWG TYPE	DWG SOURCE	DWG DATE	UNIT	SCL	ANGLE
A	±0.15	±0.2	±0.3	±0.5	±0.75	±30'	0.1	R	7283-8397-40:M	12.18.08	mm	5/1	3
B	±0.2	±0.3	±0.55	±0.95	±1.4	±30'	0.1	APPROVED	CHECKED	CHECKED	DESIGN	DRAWN	
C	±0.3	±0.5	±0.8	±1.4	±2	±30'	0.15				J. GAGNON	PALOMA MENDIAS	
WEIGHT g 02.05.01 02.05.09 02.05.01 02.17.03 01.05.09													

LET	DATE	REVISION RECORD	NO.	MR	CHKD
-	12.18.08	NEW	C08-AC31	MR	CHKD