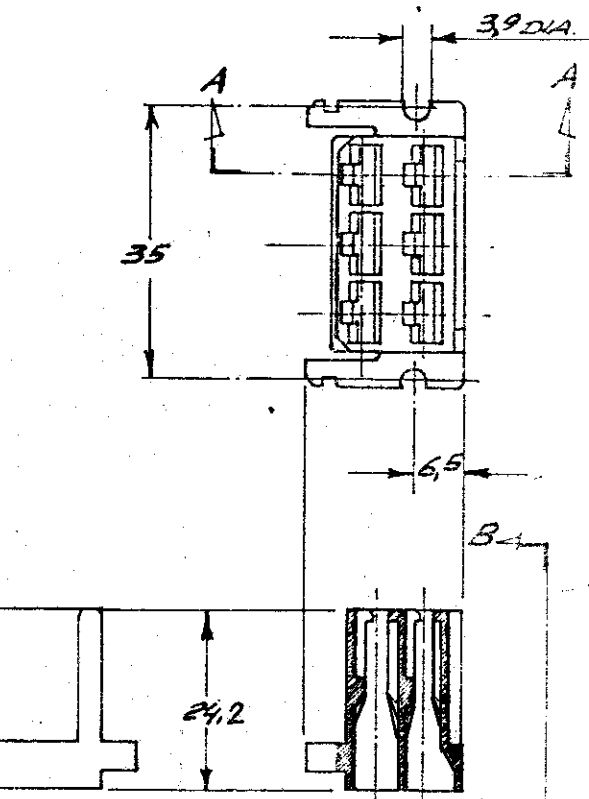
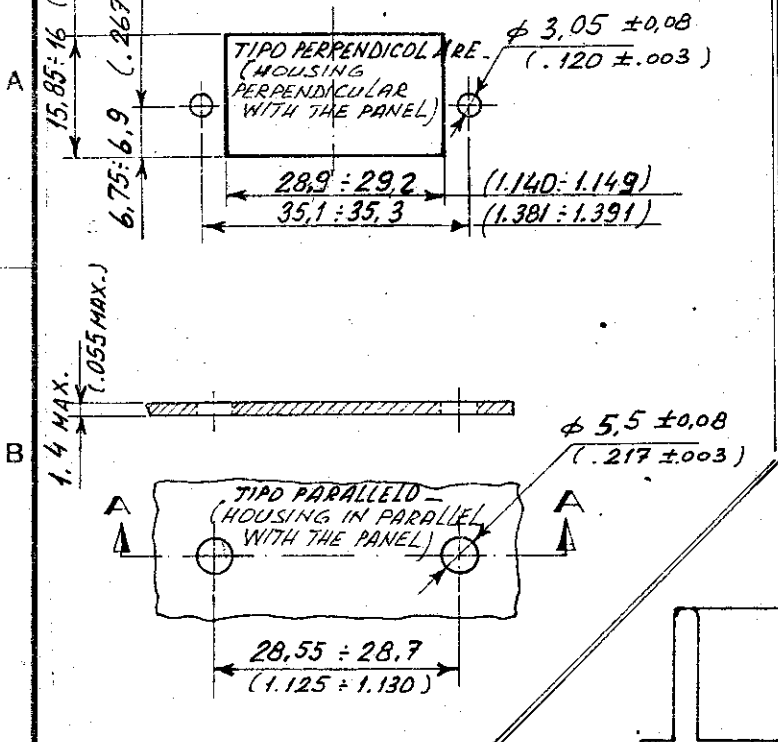


**DIME DI FORATURA**  
(RECOMMENDED PANEL CUTOUT)

SCALA NON IMPEGNATIVA  
(DO NOT SCALE)  
DIMENSIONI IN mm  
DIMENSIONS IN mm

**METRIC**

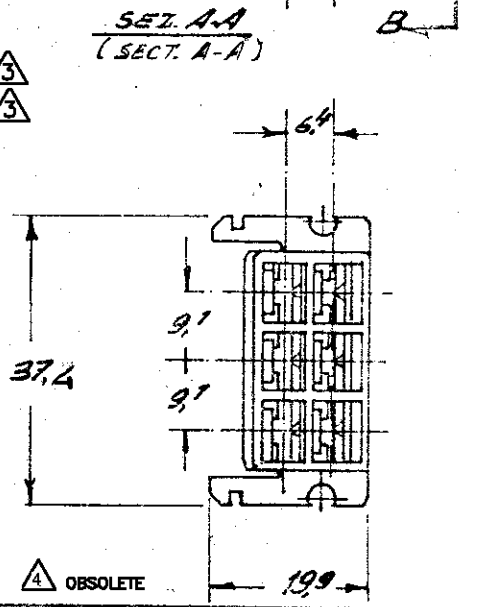
PROIEZIONE EUROPEA  
(EUROPEAN PROJECTION)



NOTE:  $\Delta$  NON PRODOTTO DALL' TE ITALIA; SOLO PER PRODUZIONE TE GERMANY. (NOT PRODUCED BY TE ITALY; FOR TE GERMANY PRODUCT ONLY)

$\Delta$  OBSOLETE PARTS: OBSOLETE CIS STREAMLINING PER D.RENAUD/D.SINISI

| NOTE (NOTES) | COLORE (COLOUR)   | MATERIALE (MATERIAL)                       | NUMERO (PART NUMBER) |
|--------------|-------------------|--|----------------------|
|              | CLEAR             | 180904-0                                   | 3-180904-0           |
|              | NEUTRO (CLEAR)    | POLIAMMIDE 6.6 ULTRAV. (PA 6.6 F.R. 94V-0) | 3-180904-0           |
|              | ARANCIO (ORANGE)  |  | $\Delta$ 180904-1    |
|              | VIOLETTA (VIOLET) |  | $\Delta$ 180904-2    |
|              | GRIGIO (GRAY)     |  | $\Delta$ 180904-3    |
|              | MARRONE (BROWN)   |  | $\Delta$ 180904-4    |
|              | NERO (BLACK)      |  | $\Delta$ 180904-5    |
|              | GIALLO (YELLOW)   |  | $\Delta$ 180904-6    |
|              | BLU (BLUE)        |  | $\Delta$ 180904-7    |
|              | VERDE (GREEN)     |  | $\Delta$ 180904-8    |
|              | ROSSO (RED)       |  | $\Delta$ 180904-9    |
|              | NEUTRO (CLEAR)    |  | 180904-0             |



$\Delta$  SAME AS 180904-0 EXCEPT PACKAGING: TWO PLASTIC BAG WITH 10 PIECES ON CARTON BOX 1400

|                                     |                      |                      |
|-------------------------------------|----------------------|----------------------|
| FINITURA / COLORE (FINISH / COLOUR) | MATERIALE (MATERIAL) | NUMERO (PART NUMBER) |
|-------------------------------------|----------------------|----------------------|

**CUSTOMER DWG. FOR REFERENCE ONLY**      **DISEGNO PER CLIENTE SOLO PER RIFERIMENTO**

THIS DRAWING IS UNPUBLISHED - RELEASE FOR PUBLICATION  
© COPYRIGHT 19 BY TE INCORPORATED, HARRISBURG, PA ALL INTERNATIONAL RIGHT RESERVED TE PRODUCTS MAY BE COVERED BY U.S. AND FOREIGN PATENT AND/OR PATENT PENDING

|      |   |      |             |
|------|---|------|-------------|
| AP2  | ECR-10-022530   | KK   | 11FEB11     |
| AP1  | REV PER ECO-10-000445   | KK   | JAN10       |
| AP   | Revised by E500-011-97  | U    | PROV        |
| AN   | Revised by E500-011-97  | AP   | EN 77       |
| AM   | Revised by E500-0052-97   | AP   | OCT 77      |
| AL   | Revised for ET00-0005-97  | EN   | 101         |
| N    | RIVISTO E RIDISEGNATO; ELIMINATO I PINS CON NUMERAZ. SERIE RATA (REVISED & REDRAWN; OBSOLETE PINS WITH EXTRA NUMBERING) | EN   | 6-86        |
| REV. | REVISIONI (REVISION RECORD)   | DIS. | DATA (DATE) |

|   |   |                         |                   |
|---|---|-------------------------|-------------------|
| TOLLERANZE: SE NON DIVERSAMENTE SPECIFICATO (TOLERANCES UNLESS OTHERWISE SPECIFIED) | DIAM. ISOLANTE (INS. DIA. RANGE)  | RANGO FILO (WIRE RANGE) | SCALA (SCALE)     |
| $\pm 0,4$   | $\pm 0,4$   | $\pm 0,4$               | $\pm 0,4$         |
| ANGOLI (ANGLES) $\pm 2^\circ$   | TE Connectivity   |                         |                   |
| DIS. (DR.)  | DESCRIZIONE (DESCRIPTION): <b>6 WAY FASTIN-FASTON REC. HOUSING - .250" SER.</b> |                         |                   |
| APP. (APP.)   | LOC. (LOC.)   | SIZE                    | NUMERO (DWG. NO.) |
|   | ALA   | C                       | 180904            |

|      |                             |      |             |
|------|-----------------------------|------|-------------|
| REV. | REVISIONI (REVISION RECORD) | DIS. | DATA (DATE) |
| REV. | REVISIONI (REVISION RECORD) | DIS. | DATA (DATE) |
| REV. | REVISIONI (REVISION RECORD) | DIS. | DATA (DATE) |
| REV. | REVISIONI (REVISION RECORD) | DIS. | DATA (DATE) |
| REV. | REVISIONI (REVISION RECORD) | DIS. | DATA (DATE) |
| REV. | REVISIONI (REVISION RECORD) | DIS. | DATA (DATE) |
| REV. | REVISIONI (REVISION RECORD) | DIS. | DATA (DATE) |
| REV. | REVISIONI (REVISION RECORD) | DIS. | DATA (DATE) |
| REV. | REVISIONI (REVISION RECORD) | DIS. | DATA (DATE) |
| REV. | REVISIONI (REVISION RECORD) | DIS. | DATA (DATE) |

DISTRIBUZIONE (PRINT DIST.)