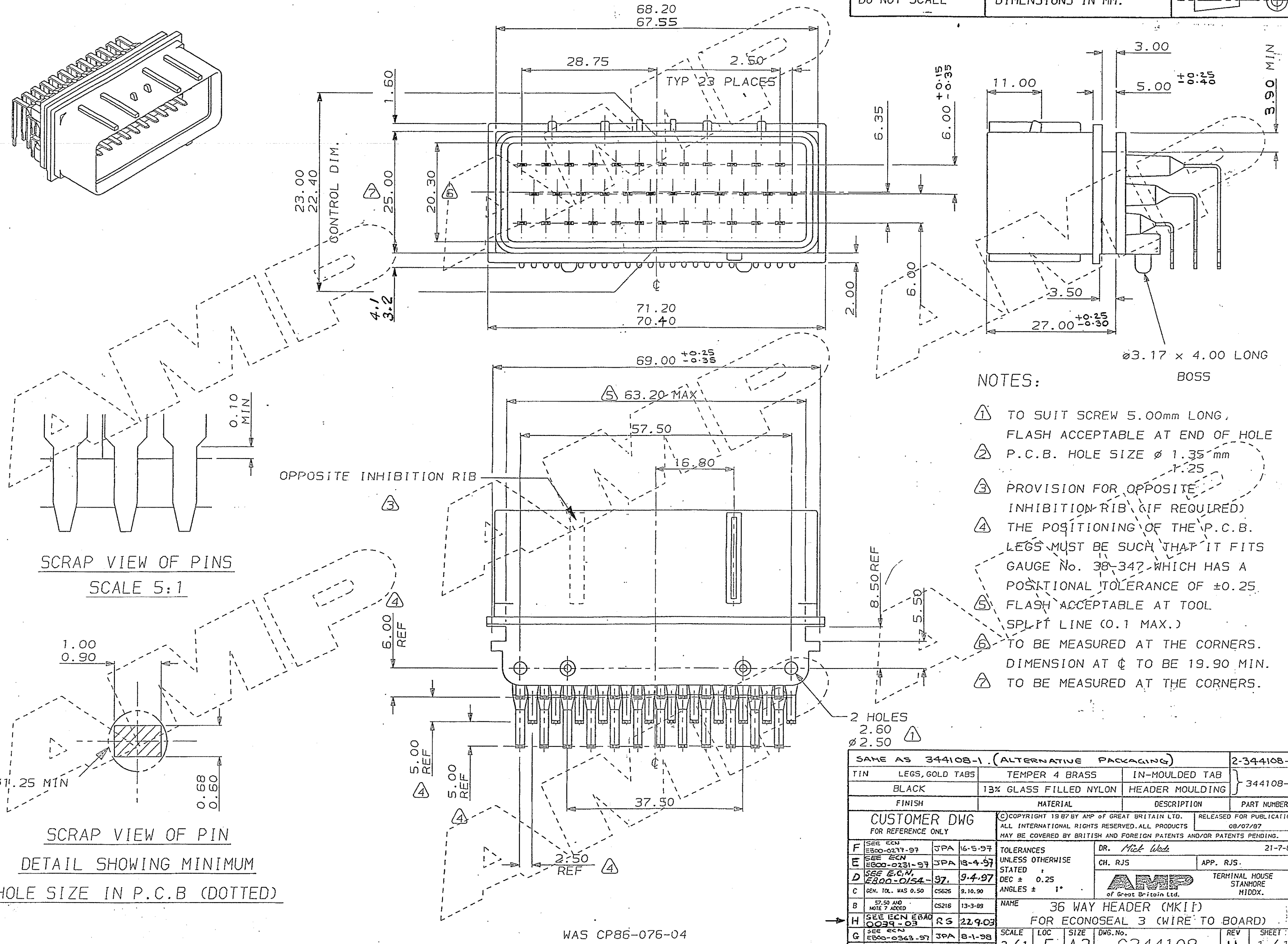
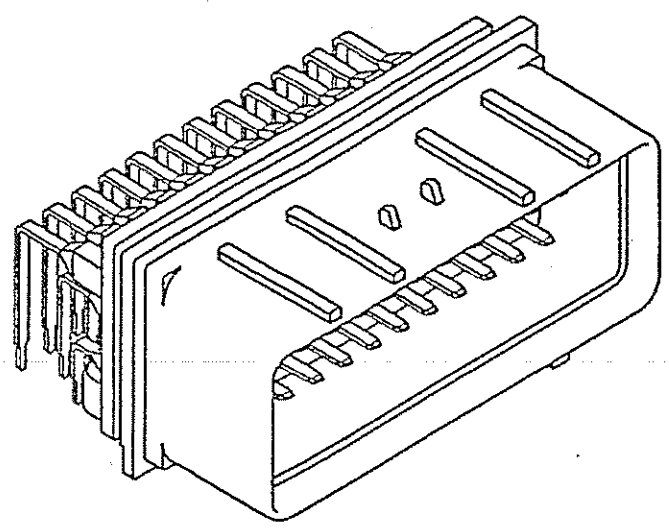


C.A.D. FILE CODE  
S. C344108.

DO NOT SCALE DIMENSIONS IN MM.



- NOTES:
- ① TO SUIT SCREW 5.00mm LONG, FLASH ACCEPTABLE AT END OF HOLE
  - ② P.C.B. HOLE SIZE Ø 1.35 mm
  - ③ PROVISION FOR OPPOSITE INHIBITION RIB (IF REQUIRED)
  - ④ THE POSITIONING OF THE P.C.B. LEGS MUST BE SUCH THAT IT FITS GAUGE No. 38-347 WHICH HAS A POSITIONAL TOLERANCE OF ±0.25
  - ⑤ FLASH ACCEPTABLE AT TOOL SPLIT LINE (0.1 MAX.)
  - ⑥ TO BE MEASURED AT THE CORNERS. DIMENSION AT C TO BE 19.90 MIN.
  - ⑦ TO BE MEASURED AT THE CORNERS.

SCRAP VIEW OF PINS  
SCALE 5:1

SCRAP VIEW OF PIN  
DETAIL SHOWING MINIMUM  
HOLE SIZE IN P.C.B (DOTTED)

SAME AS 344108-1 (ALTERNATIVE PACKAGING)				2-344108-1
TIN	LEGS, GOLD TABS	TEMPER 4 BRASS	IN-MOULDED TAB	344108-1
BLACK	13% GLASS FILLED NYLON	HEADER MOULDING		
FINISH	MATERIAL	DESCRIPTION	PART NUMBER	
CUSTOMER DWG FOR REFERENCE ONLY		COPYRIGHT 1987 BY AMP OF GREAT BRITAIN LTD. ALL INTERNATIONAL RIGHTS RESERVED. ALL PRODUCTS MAY BE COVERED BY BRITISH AND FOREIGN PATENTS AND/OR PATENTS PENDING.		21-7-88
F	SEE ECN EB00-0237-97	JPA	16-5-97	TOLERANCES UNLESS OTHERWISE STATED
E	SEE ECN EB00-0231-97	JPA	18-4-97	DEC ± 0.25
D	SEE E.C.N. EB00-0154-97	JPA	9-4-97	ANGLES ± 1°
C	GEN. TOL. WAS 0.50	CS625	9.10.90	
B	57.50 AND NOTE 7 ADDED	CS216	13-3-88	NAME
H	SEE ECN EB00-0295-93	RS	22-9-03	36 WAY HEADER (MKII) FOR ECONOSEAL 3 (WIRE TO BOARD)
G	SEE ECN EB00-0363-97	JPA	8-1-98	SCALE LOC SIZE DWG.No.
REV	APPROVED	ECN	DATE	2/1 E A2 C344108
				REV SHEET H 1/1

WAS CP86-076-04

\*.x - 0.TIF - 9/15/03 8:14:42 AM