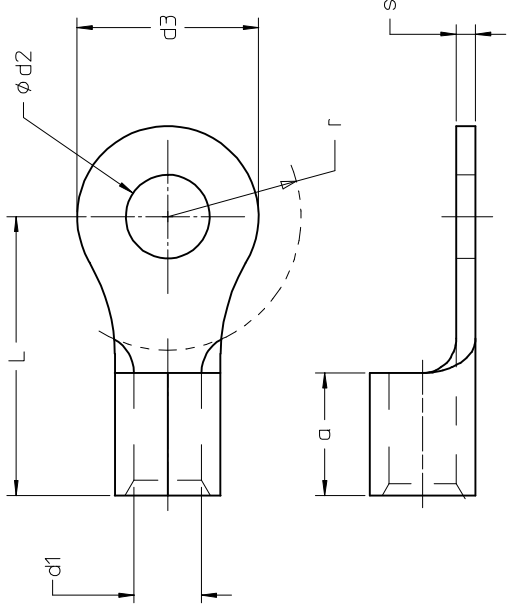


10	9	8	7	6	5	4	3	2	19323
MATERIAL NUMBER	ALTERNATE PART NUMBER	NOM WIRE SIZE AND RANGE (MM ²)	NOM BOLT SIZE (MM)	DIMENSIONS					
				d1 MIN	d2 ± 0,7	d3 ±0,25	L MAX	r MIN	s NOM
F	193230001	AA1-332-M2,5	2,5	1,6	2,77	6,45	11,5	4	0,71
F	193230002	AA1-332-M3	3	1,6	3,29	6,45	11,5	4,5	0,71
F	193230003	AA1-332-M3,5	3,5	1,6	3,79	6,45	11,5	4,5	0,71
F	193230004	AA1-321-M4	4	1,6	4,39	7,92	12,5	6	0,71
F	193230005	AA1-322-M5	5	1,6	5,39	11,86	15,2	6,5	0,71
F	193230006	BB2,5-323-M3	3	2,1	3,29	6,35	11,5	4,5	0,79
F	193230007	BB2,5-323-M3,5	3,5	2,1	3,79	6,35	11,5	4,5	0,79
F	193230008	BB2,5-337-M4	4	2,1	4,39	7,92	12,5	6	0,79
F	193230009	BB2,5-339-M5	5	2,1	5,39	8,69	14,5	6,5	0,79
F	193230010	BB2,5-325-M6	6	2,1	6,61	11,86	16,5	7,5	0,79
F	193230011	BB2,5-318-M8	8	2,1	8,51	13,56	19,0	10	0,79
F	193230012	C6-336-M4	4	6,00	4,39	7,16	15,2	6	1,02
F	193230013	C6-328-M5	5	6,00	5,39	9,53	15,5	6,5	1,02
F	193230014	C6-330-M6	6	6,00	6,61	13,46	17,4	7,5	1,02
F	193230015	C6-330-M8	8	6,00	8,51	13,46	19,5	10	1,02
F	193230016	C6-340-M10	10	6,00	10,63	14,94	21,5	12	1,02



NOTES:
 1. MATERIAL: TIN-PLATED COPPER
 WITH BRAZED BARREL SEAM.
 2. PARTS ARE ROHS COMPLIANT.

SALES DRAWING

QUALITY SYMBOLS	GENERAL TOLERANCES (UNLESS SPECIFIED)	DIMENSION STYLE	SCALE	DESIGN UNITS	THIRD ANGLE PROJECTION
▶=0 ◁=0	mm ± --- inch ± ---	MM ONLY	---	METRIC	
DESCRIPTION	TITLE	DRAWN BY	DATE	VERSARIMP 0,5 - 6 MM2	
RELEASE	SEE CHART	ETHRODAHL	2011/09/15	MOLEX INCORPORATED	
1	DRAFT WHERE APPLICABLE MUST REMAIN WITHIN DIMENSIONS	CHECKED BY	DATE	DOCUMENT NO.	
1		JMACNEIL	2011/09/15	SD-19323-001	
6		APPROVED BY	DATE	SHEET NO.	
6		JMACNEIL	2012/12/11	1 OF 1	
6		MATERIAL NO.		INCORPORATED AND SHOULD NOT BE USED WITHOUT WRITTEN PERMISSION	
6		JMACNEIL		B	