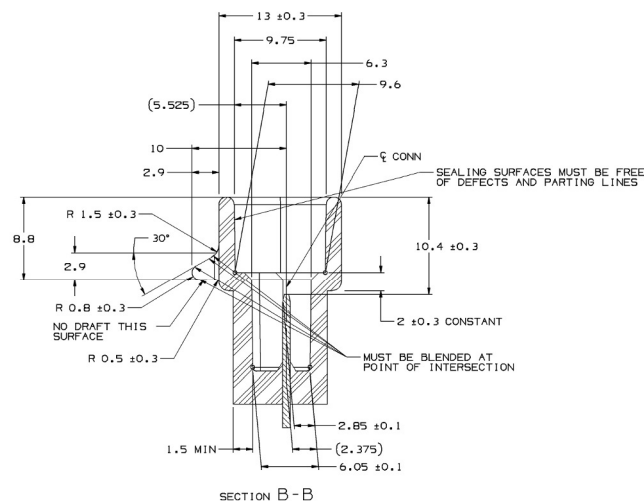
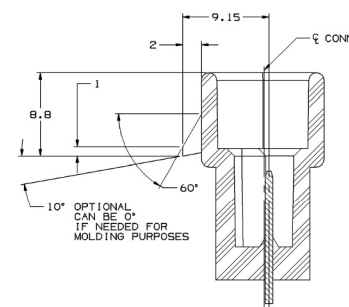


TYPE 102
SAME AS TYPE 101
EXCEPT AS SHOWN



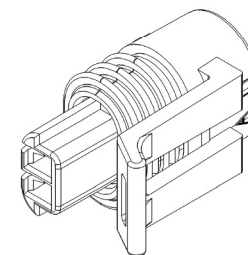
NOTES

1. UNLESS OTHERWISE SPECIFIED AND/OR INDICATED:
DIMENSIONS ARE TO FACE OF VIEW SHOWN AND
AUTOMATICALLY ROUNDED BY COMPUTER FOR INSPECTION.
(SEE MATH MODEL FOR PRECISE DIMENSIONS.) FOR ALL
OTHER DIMENSIONS NOT SHOWN BUT REQUIRED FOR TOOL
BUILD, SEE MATH MODEL FOR PRECISE TOOL PATH DATA.
ALL RADII 0.4
DRAFT IS 1° ON ALL OUTSIDE SURFACES
2. RECOMMENDED MATERIAL: GLASS REINFORCED NYLON OR POLYESTER

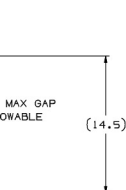


SECTION C-C

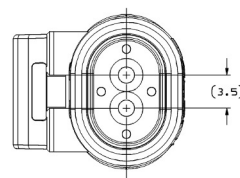
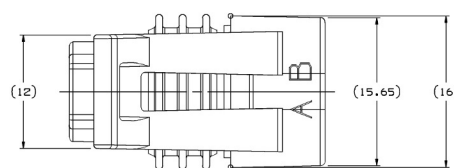
MATING CONNECTOR INFORMATION



SYMBOL DEFINITION			MISSING SYMBOL
A DIMENSION WITHOUT AN INSPECTION REPORT SYMBOL <input type="checkbox"/> DOES NOT REQUIRE INSPECTION. IT MAY BE CONTROLLED ON THE INDIVIDUAL COMPONENT DRAWING.	TOTAL NO OF INSPECTIONS REQUIRED	2	NO MISSING SYMBOL NUMBER
	LAST NO. USED	2	



OPTIONAL CONSTRUCTION
SCALE 10:1



	-	-	3310	01	AD	101	15344948 - GRN	1528192	12040750	RESTRICTED
13883975	01	AA	13584122	01	AD	101	12110169 - LT GRN	1254120	1311248	
-	-	-	15324478	02	AF	101	12078083 - TAN	1532477	12040750	
-	-	-	15304635	A6	-	102	1210169 - LT GRN	1530436	12040750	
-	-	-	12162195	A6	-	101	1210169 - LT GRN	1216292	12040750	
-	-	-	12162194	A6	-	101	12078083 - TAN	1216292	12040750	
-	-	-	12065242	A	-	101	12040751 - GRN	1206524	12040750	
-	-	-	12162193	A6	-	101	12040751 - GRN	1216292	12040750	
PART NO WITH ADHESIVE	REV	N/P	PART NO WITHOUT ADHESIVE	REV	N/P	TYPE	CABLE SEAL AND COLOR	CONN NO	CONN SEAL	RESTRICTED USAGE

SEE NOTE #5

NOTES

1. UNLESS OTHERWISE SPECIFIED AND/OR INDICATED: DIMENSIONS ARE TO FACE OF VIEW SHOWN AND AUTOMATICALLY ROUNDED BY COMPUTER FOR INSPECTION. (SEE MATH MODEL FOR PRECISE DIMENSIONS.)
2. WHEN PARTS ARE SHIPPED THEY MUST BE PACKED IN PLASTIC BAGS OR SHIPPING CONTAINERS MUST BE LINED WITH PLASTIC LINERS. BAGS OR LINES MUST BE SEALED TO AVOID ENTRY OF FOREIGN MATTER.
3. THIS PRODUCT IS NOT CATEGORIZED AS AN APPEARANCE ITEM, MINOR IMPERFECTIONS INCLUDING, BUT NOT LIMITED TO, FLOW MARKS, COLOR BLENDES, GRASS FLAKES AND SURFACE DEFECTS DO NOT AFFECT FIT, FORM, OR FUNCTION OF THE PART ARE PERMISSIBLE PER DPNP-4.7-CS-01.
4. FOR LEAD LENGTH CALCULATIONS, DISTANCE FROM MATING END OF CONNECTOR TO FRONT OF CABLE CORE IS 10.75/7.05.
5. FOR PART NUMBER WITH ADHESIVE, USE M3510001 OR ADHESIVE APPROVED BY MATERIALS ENGINEERING TO GLUE CONNECTOR SEAL TO CONNECTOR.
6. FOR APPLICATION DATA SEE THE INDIVIDUAL APPLICATION DRAWINGS.
7. S-60-T LUBEWELL LUBRICANT CAN BE USED AS AN AUXILIARY SUPPORT ON THE CABLE INSTALLATION PROCESS.

N/A	PROCESS SENSITIVE DIM
-----	-----------------------

DIMENSIONS ENCLOSED IN () INDICATE
REFERENCE DIMENSIONS AND NO TOLERANCE

LIMITS ARE ESTABLISHED
CHA

	> 70	> 100	> 150	> 200	> 250
	100	150	200	250	300

UNLESS OTHERWISE SPECIFIED					
±0.4	±0.5	±0.6	±0.8	±1	
HARD TOLERANCE ±2°					

4
