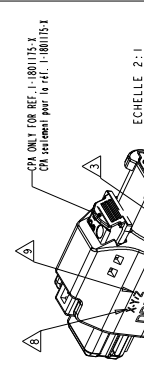
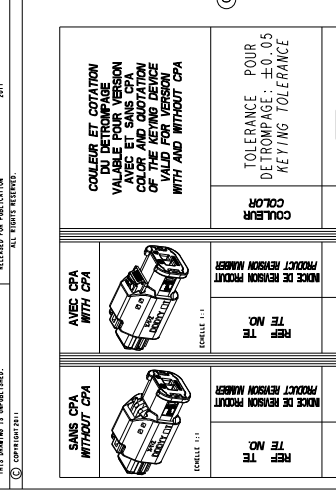
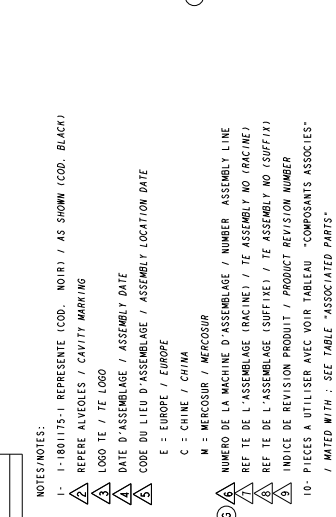
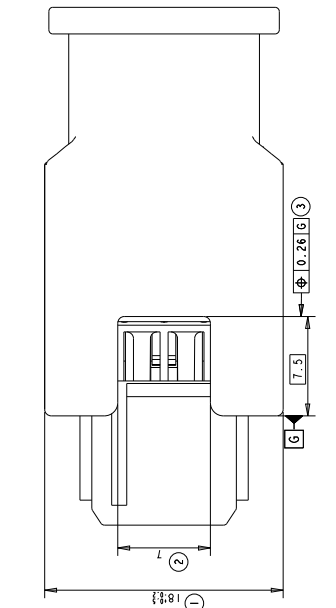


| REV. NO. | DATE | BY | CHKD |
|------------------|------|----|------|
| F 00 | | | |
| DRAWING REVISION | | | |
| DESCRIPTION | | | |



CEA ONLY FOR REF. 1-1801175-1
CEA standard part in ref. 1-1801175-1

ECHELLE 2:1



| REF. NO. | TE | REF. NO. | TE | COLOR | COLLEUR | SCALE |
|-------------|----|-----------|----|--------|---------|-------|
| 1-1801175-1 | E | 1801175-1 | E | ORANGE | ORANGE | 1:1 |
| 1801175-2 | E | 1801175-2 | E | ROUGE | ROUGE | 1:1 |
| 1801175-3 | E | 1801175-3 | E | BLANC | BLANC | 1:1 |
| 1801175-4 | E | 1801175-4 | E | MARRON | MARRON | 1:1 |
| 1801175-5 | E | 1801175-5 | E | VERT | VERT | 1:1 |
| 1801175-6 | E | 1801175-6 | E | JAUNE | JAUNE | 1:1 |
| 1801175-7 | E | 1801175-7 | E | GRIS | GRIS | 1:1 |
| 1801175-8 | E | 1801175-8 | E | BLEU | BLEU | 1:1 |
| 1801175-9 | E | 1801175-9 | E | NOIR | NOIR | 1:1 |

NOTES: 1- 1-1801175-1 REPRESENTS (COD. NOIR) / AS SHOWN (COD. BLACK)
2- REFERS ALVEOLES / CAVITY MARKING
3- LOGO TE / TE LOGO
4- DATE D'ASSEMBLAGE / ASSEMBLY DATE
5- CODE DU LIEU D'ASSEMBLAGE / ASSEMBLY LOCATION DATE
E = EUROPE / EUROPE
C = CHINE / CHINA
M = MECOSUR / MECOSUR
6- NUMERO DE LA MACHINE D'ASSEMBLAGE / NUMBER ASSEMBLY LINE
7- REF DE L'ASSEMBLAGE (MACHINE) / TE ASSEMBLY NO (MACHINE)
8- REF DE L'ASSEMBLAGE (SUFFIXE) / TE ASSEMBLY NO (SUFFIX)
9- INDICE DE REVISION PRODUIT / PRODUCT REVISION NUMBER
10- PIECES A UTILISER AVEC VOIR TABLEAU "COMPOSANTS ASSOCIES" / MATED WITH - SEE TABLE "ASSOCIATED PARTS"

SECTION CABLE ADMISSIBLE PAR CONTACT
ACCEPTABLE CABLE SECTION PER CONTACT
The section of the cables used must be between 0.35 and 2mm² (with insulator diameter included between 1.40mm min and 2.80mm Max)
CABLE SECTION PER CONTACT
ACCEPTABLE CABLE SECTION PER CONTACT
The section of the cables used must be between 0.35 and 2mm² (with insulator diameter included between 1.40mm min and 2.80mm Max)

| DESCRIPTION | TE | REF. NO. |
|-------------|----|-------------|
| ORANGE | F | 1-1801175-1 |
| VERTE | F | 1-1801175-4 |
| BLEU | F | 1-1801175-2 |
| NOIR | F | 1-1801175-1 |
| GRIS | F | 1-1801175-3 |
| JAUNE | F | 1-1801175-4 |
| VERT | F | 1-1801175-5 |
| MARRON | F | 1-1801175-6 |
| BLANC | F | 1-1801175-7 |
| ROUGE | F | 1-1801175-8 |
| ORANGE | F | 1-1801175-9 |

SELECTION POUR REF. 1-1801175-X
ONLY FOR REF. 1-1801175-X

COMPONENTS ASSOCIATED PARTS

| REF. NO. | TE | DESCRIPTION |
|-------------|----|---|
| 1-1801175-1 | F | RECEPTACLE 2 VOIES - LEFT/RIGHT EXIT |
| 1-1801466-1 | F | RECEPTACLE 2 VOIES - SORTIE GAUCHE/DROITE |
| 1-1801466-2 | F | RECEPTACLE 2 VOIES - SORTIE HAUT/BAS |
| 1-1801466-3 | F | RECEPTACLE 2 VOIES - SORTIE HAUT/BAS |
| 1-1801155-5 | F | RECEPTACLE 2 VOIES - SORTIE HAUT/BAS |
| 1-1801155-5 | F | RECEPTACLE 2 VOIES - SORTIE HAUT/BAS |
| 1-1801356-1 | F | RECEPTACLE 2 VOIES - SORTIE HAUT/BAS |
| 1670328-1 | F | RECEPTACLE 2 VOIES - SORTIE HAUT/BAS |
| 1670326-1 | F | RECEPTACLE 2 VOIES - SORTIE HAUT/BAS |
| 1564174-1 | F | RECEPTACLE 2 VOIES - SORTIE HAUT/BAS |
| 1801174-X | F | RECEPTACLE 2 VOIES - SORTIE HAUT/BAS |

POSITION DE LIVRAISON
CONDITION AS DELIVERY

COUPE A-A
ECHELLE 3:1

RECEPTACLE CONNECTOR WITH SECONDARY LOCKING ACTIVATED

TE Connectivity

2 WAYS RECEPTACLE CONNECTOR HP

PORTE-CLIPS 2 VOIES HP

Customer Drawing

100779

801175

5:1

REV. HP

TE Connectivity

2 WAYS RECEPTACLE CONNECTOR HP

PORTE-CLIPS 2 VOIES HP

Customer Drawing

100779

801175

5:1

REV. HP

TE Connectivity