



# 5106.xx



## Splice UP-SP Terminals

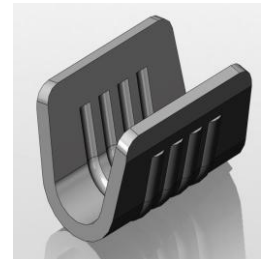
**Description** Special terminals - End crimping

**Wire section range** 6.00 – 10.00 mm<sup>2</sup> (AWG 10 - 08)

**Materials & Temperature**

Part nr.	Material	Finishing	Max. temp. (C°)
5106.00	Brass	Natural	110
5106.02	Brass	Tin plated	120
5106.24	Steel	Nickel-plated	300

**Notes:** Max. recommended temperature



**Material thickness** 0.8 mm

**Application tool** MN5106

**Wire striping length** 10 (±0.5) mm

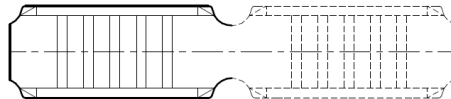
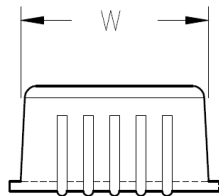
**Crimping parameters & Pull out force**

Wire section (mm <sup>2</sup> ±10%)	Conductor (±0,03)		Pull-out force (N)
	Height (mm.)	Width (mm.)	
Nominal			ESCUBEDO
6.00	3.60	6.15	> 600
7.00	3.75	6.16	> 600
8.00	3.90	6.17	> 700
10.00	4.20	6.22	> 800

**Note:** Values only valid for the application tool specified upwards.

**Packaging** 6000 Pieces on 300 mm. Ø x 160 mm. wide cardboard reel, 12 mm terminal chain pitch

**Drawing**



**Approvals**

- RoHS Compliant



**Disclaimer**

Data obtained from Escubedo Laboratory essays, using own methodology, cablings and equipment, done in laboratory conditions and following the indicated standards, errors and omissions excepted. This document has no contractual meaning and it is publicised only for informative purposes. It can be changed without prior notice. The end customer has the sole responsibility to check these characteristics in its environment and with its own components, manufacturing methods and equipment. See also the full range product overview if available. For further information please visit our web site or contact us.

Rev. Nr.	Modification	Date	Created/Revised	Approved
1	Creation	29/04/2013	D.Martinez	A.calvet