

THIS DRAWING IS UNPUBLISHED.

RELEASED FOR PUBLICATION

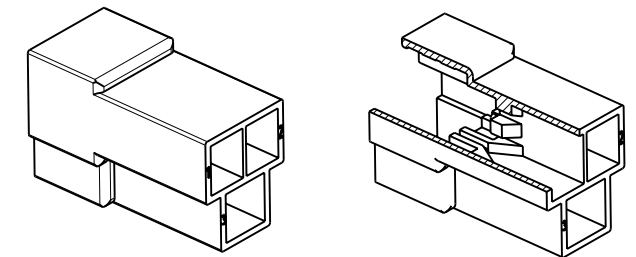
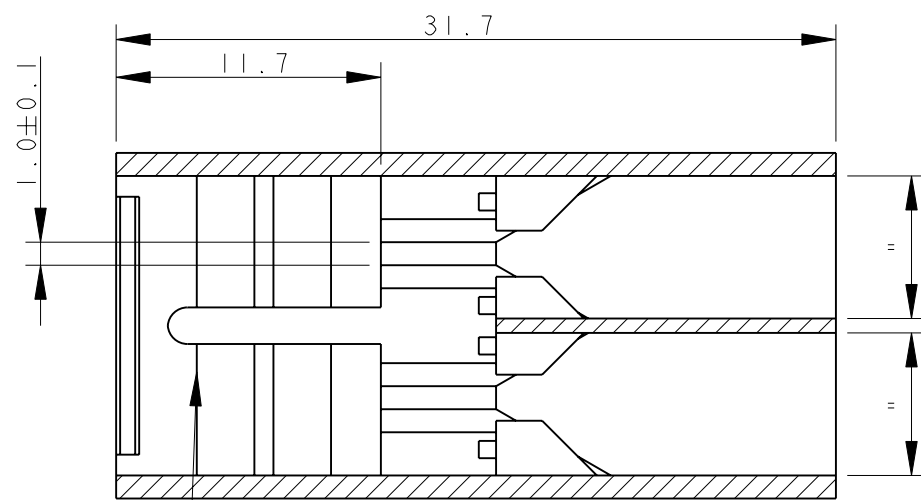
2002

© COPYRIGHT 2002

ALL RIGHTS RESERVED.

LOC	DIST	REVISIONS			
P	LTR	DESCRIPTION	DATE	DWN	APVD
S4		ADDED 3-...-0, ET00-0137-04	25 JUN 2004	HY	CT
S5		REVISED PER ECO-09-026495	19DEC2009	KK	AEG
S6		ECR-10-022530	14JUN11	KK	HMR

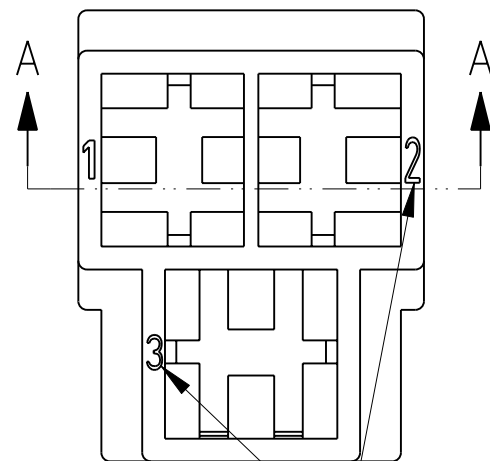
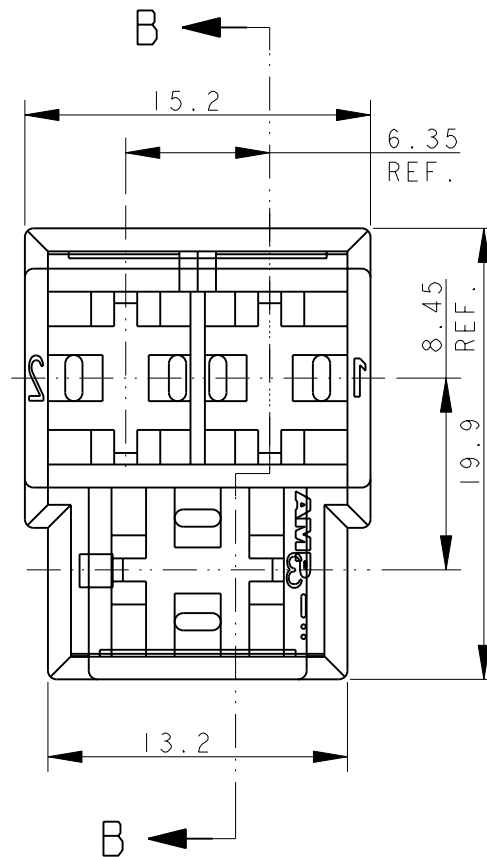
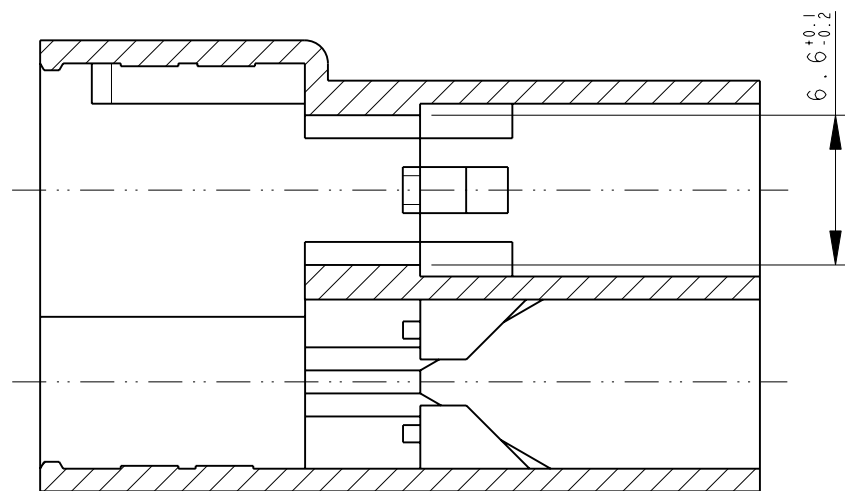
SECTION A - A



SCALE 1:1

TYPICAL CAVITY SUITABLE FOR .250" SR FASTIN-FASTON TAB CONTACT

SECTION B - B



CIRCUIT IDENTIFICATION

OBSOLETE	△3	NATURALE (NATURAL)	△1	3-180940-0	
OBSOLETE		NATURALE (NATURAL)	△2	2-180940-0	S
OBSOLETE		NATURALE (NATURAL)		1-180940-0	S
		GRIGIO (GRAY)		0-180940-7	S
		NERO (BLACK)		0-180940-5	S
		GIALLO (YELLOW)		0-180940-4	S
		BLU (BLUE)	△1	0-180940-3	S
OBSOLETE		ROSSO (RED)		0-180940-1	S
		NATURALE (NATURAL)		0-180940-0	S
NOTE		COLORE (COLOUR)	MATERIALE (MATERIAL)	PN	REV

- △1 PA 6.6 UNFILLED, UL 94-V2
- △2 PA 6 UNFILLED, GLOW WIRE TEST AT 750°C.
- △3 SAME AS 180940-0 BUT SPECIAL PACKAGING, ON CARTON BOX, TWO PLASTIC BAG WITH 1000 PIECES EACH.
- △4 OBSOLETE PARTS: OBSOLETE CIS STREAMLINING PER D.RENAUD/D.SINISI

THIS DRAWING IS A CONTROLLED DOCUMENT.		DWN H. YAALI 07AUG2002	TE Connectivity		
DIMENSIONS: mm		CHK C TARTARI			
TOLERANCES UNLESS OTHERWISE SPECIFIED:		APVD -	NAME FASTIN-FASTON* Connector, .250 sr. T TAB HOUSING 3 WAY		
0 PLC ±-		PRODUCT SPEC 108-20020	SIZE A3	CAGE CODE 00779	DRAWING NO C-180940
1 PLC ±0.3		APPLICATION SPEC -	RESTRICTED TO -		
2 PLC ±-		WEIGHT 3.1 g	SCALE 3:1 SHEET 1 OF 1 REV S6		
3 PLC ±-		CUSTOMER DRAWING			
4 PLC ±-					
ANGLES ±2°					
FINISH SEE TABLE					