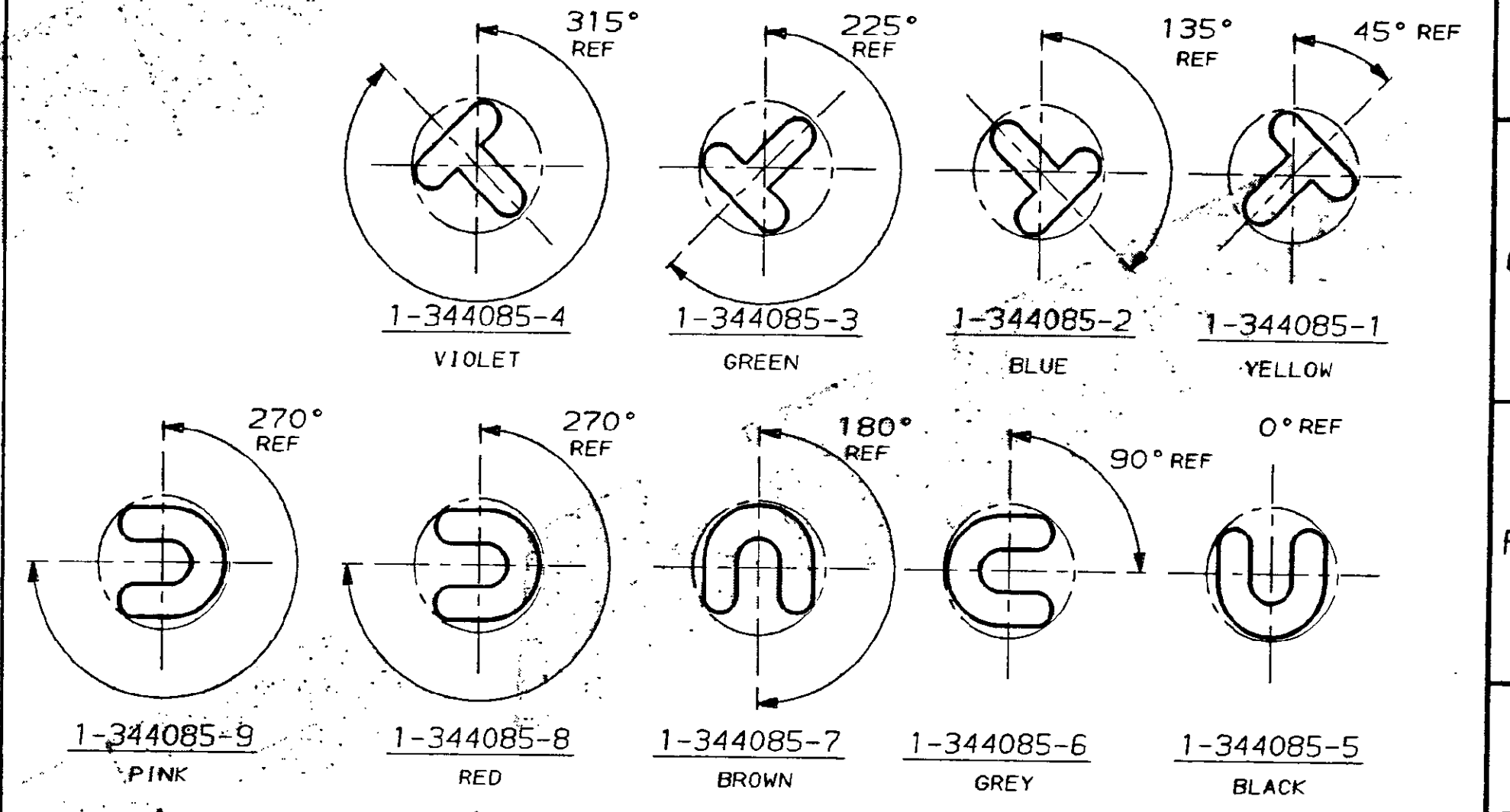
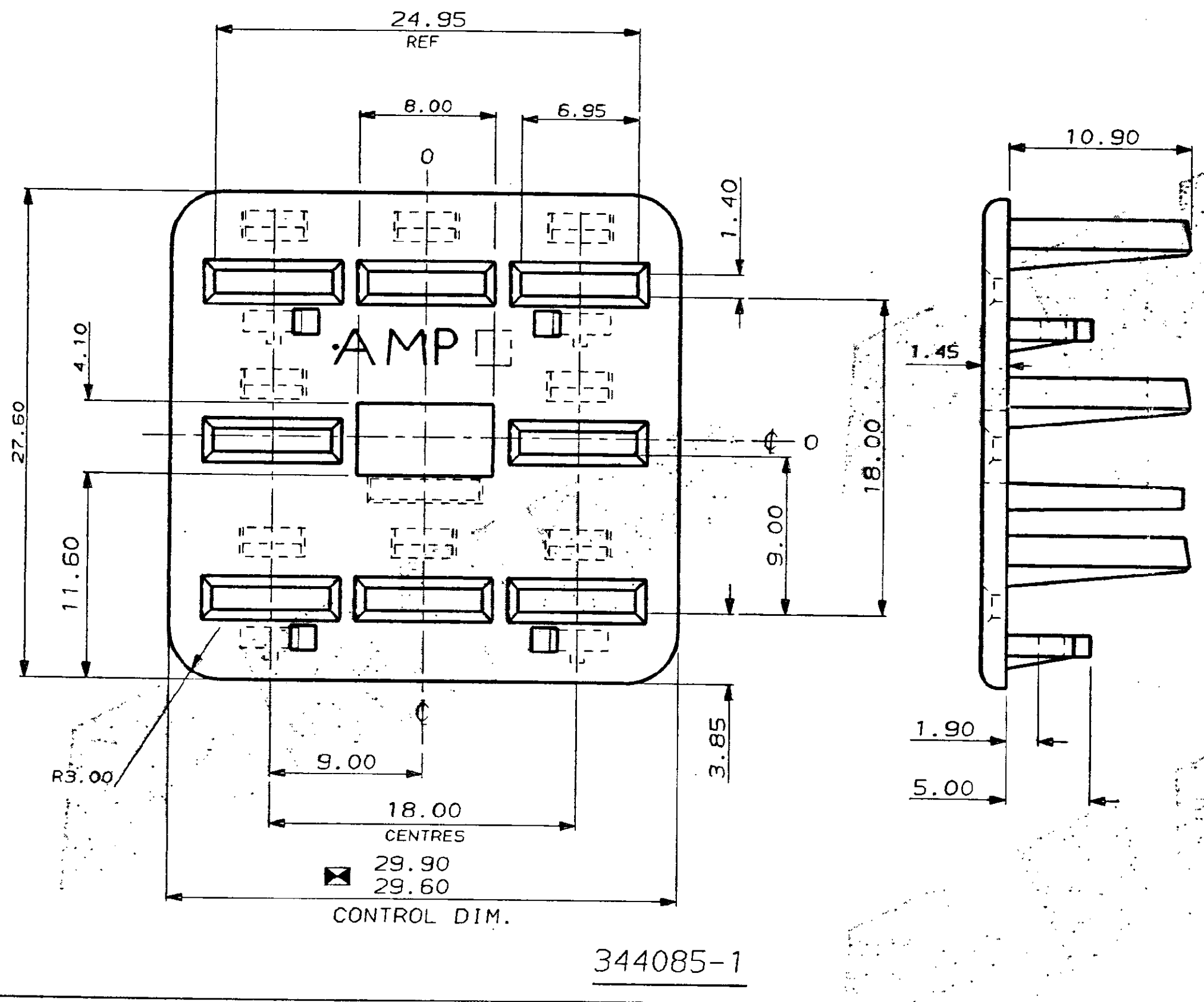


C.A.D. FILE CODE
S.C344085.D

DO NOT SCALE

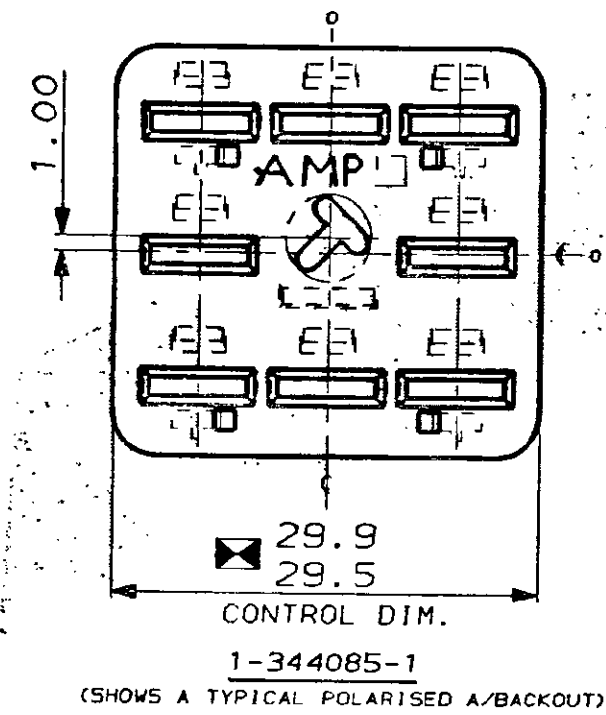
DIMENSIONS IN MM.



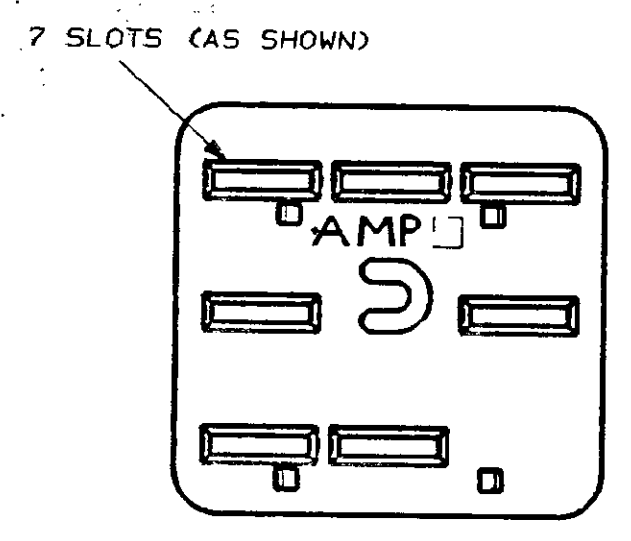
SAME POLARISATION BUT
DIFFERENT INHIBITIONS
(SEE "INHIB. VIEWS.")

VARIOUS POLARISATIONS FOR
1-344085-1 TO 1-344085-9 ONLY.

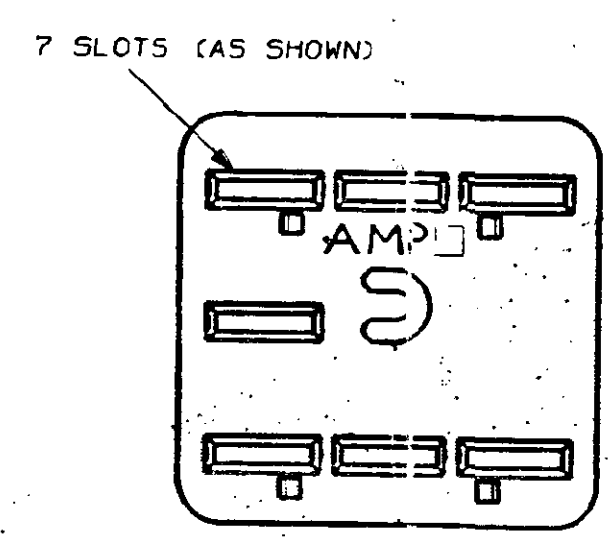
FOR REFERENCE ONLY
WILL NOT BE UP-DATED



1-344085-1
(SHOWS A TYPICAL POLARISED A/BACKOUT)



1-344085-9 (PINK)
INHIB. VIEW



1-344085-8 (RED)
INHIB. VIEW

FOR REFERENCE ONLY
WILL NOT BE UP-DATED

| | OBSOLETE | FINISH | MATERIAL | PART NUMBER |
|--|----------|------------------|-----------|-------------|
| | OBSOLETE | PINK (RAL TBA) | NYLON 6.6 | 1-344085-9 |
| | OBSOLETE | RED (RAL3000) | NYLON 6.6 | 1-344085-8 |
| | OBSOLETE | BROWN (RAL8011) | NYLON 6.6 | 1-344085-7 |
| | OBSOLETE | GREY (RAL TBA) | NYLON 6.6 | 1-344085-6 |
| | OBSOLETE | BLACK (RAL9004) | NYLON 6.6 | 1-344085-5 |
| | OBSOLETE | VIOLET (RAL4005) | NYLON 6.6 | 1-344085-4 |
| | OBSOLETE | GREEN (RAL6001) | NYLON 6.6 | 1-344085-3 |
| | OBSOLETE | BLUE (RAL5015) | NYLON 6.6 | 1-344085-2 |
| | OBSOLETE | YELLOW (RAL1018) | NYLON 6.6 | 1-344085-1 |
| | | WHITE (RAL9002) | NYLON 6.6 | 344085-1 |

| CUSTOMER DWG FOR REFERENCE ONLY | | | COPYRIGHT 1987 BY AMP OF GREAT BRITAIN LTD. ALL INTERNATIONAL RIGHTS RESERVED. ALL PRODUCTS MAY BE COVERED BY BRITISH AND FOREIGN PATENTS AND/OR PATENTS PENDING. | |
|--|----------------|---------------|---|----------------------------------|
| DI | UPDATED | ECR-15-002885 | 11MAR2015 | RELEASED FOR PUBLICATION 12.6.87 |
| D | UPDATED | EB00-0277-93 | 21.7.83 | |
| C | ADDED CON.DIM. | C5375 | 26.9.88 | |
| B | REVISED | C5331 | 4/9/89 | |
| A | UPDATED | C4956 | 14.7.88 | |
| O | REL. FOR PROD. | C4891 | 9.3.88 | |
| REV | MODIFICATION | ECN | DATE | |
| TOLERANCES UNLESS OTHERWISE STATED DEC ± 0.5 ANGLES ± 1° | | | DR. R.J.S. 12.6.87 | |
| NAME | | | CH. D.B.K.-M. APP. B.J. | |
| A/BACKOUT FOR 8 WAY REC. HSG. ECONOSEAL 3 HIGH CURRENT | | | AMP TERMINAL HOUSE STANMORE MIDDX. | |
| SCALE | LOC | SIZE | DWG.No. | REV SHEET |
| 4/1 | E | A2 | C344085 | D1 1/1 |