
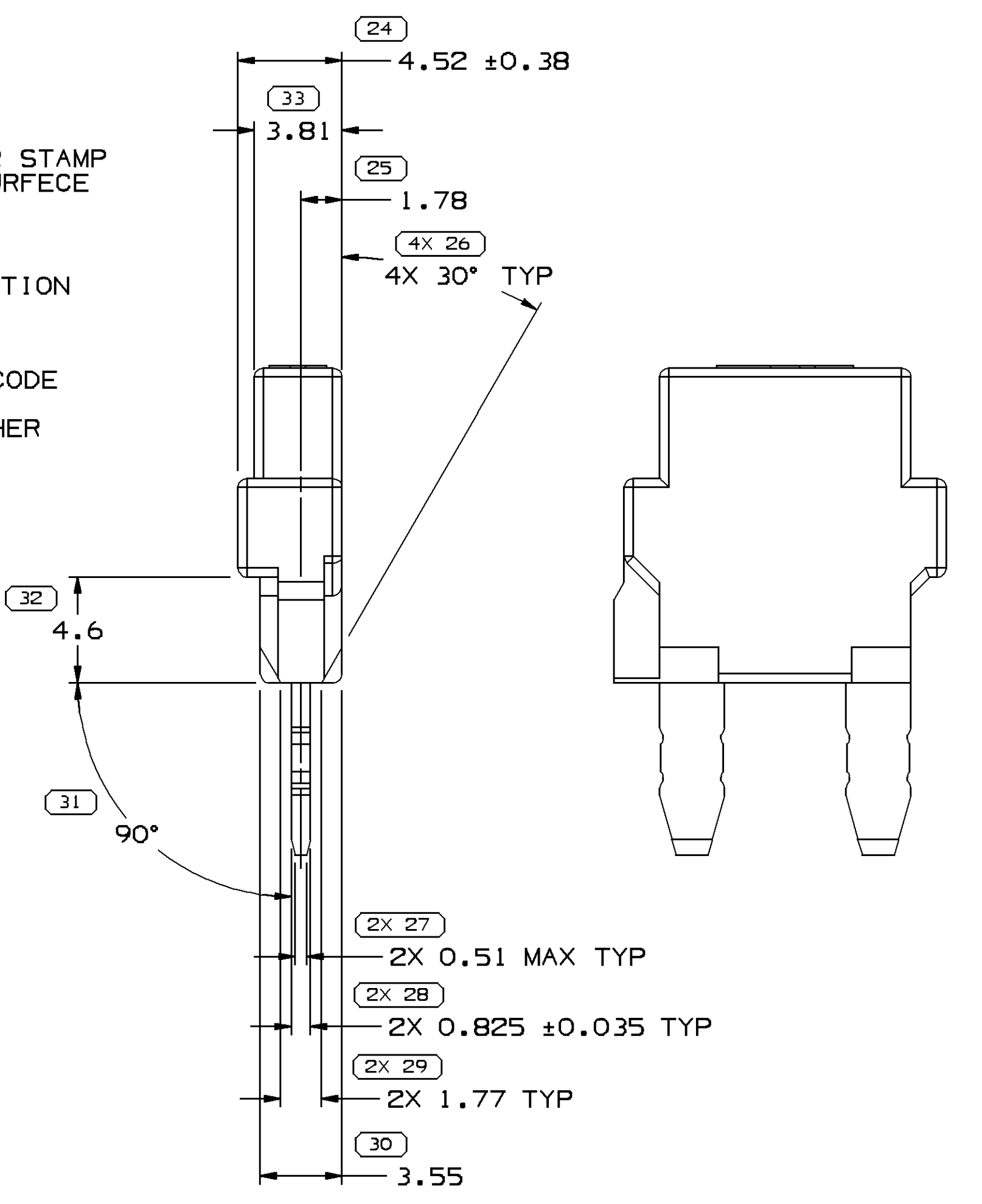
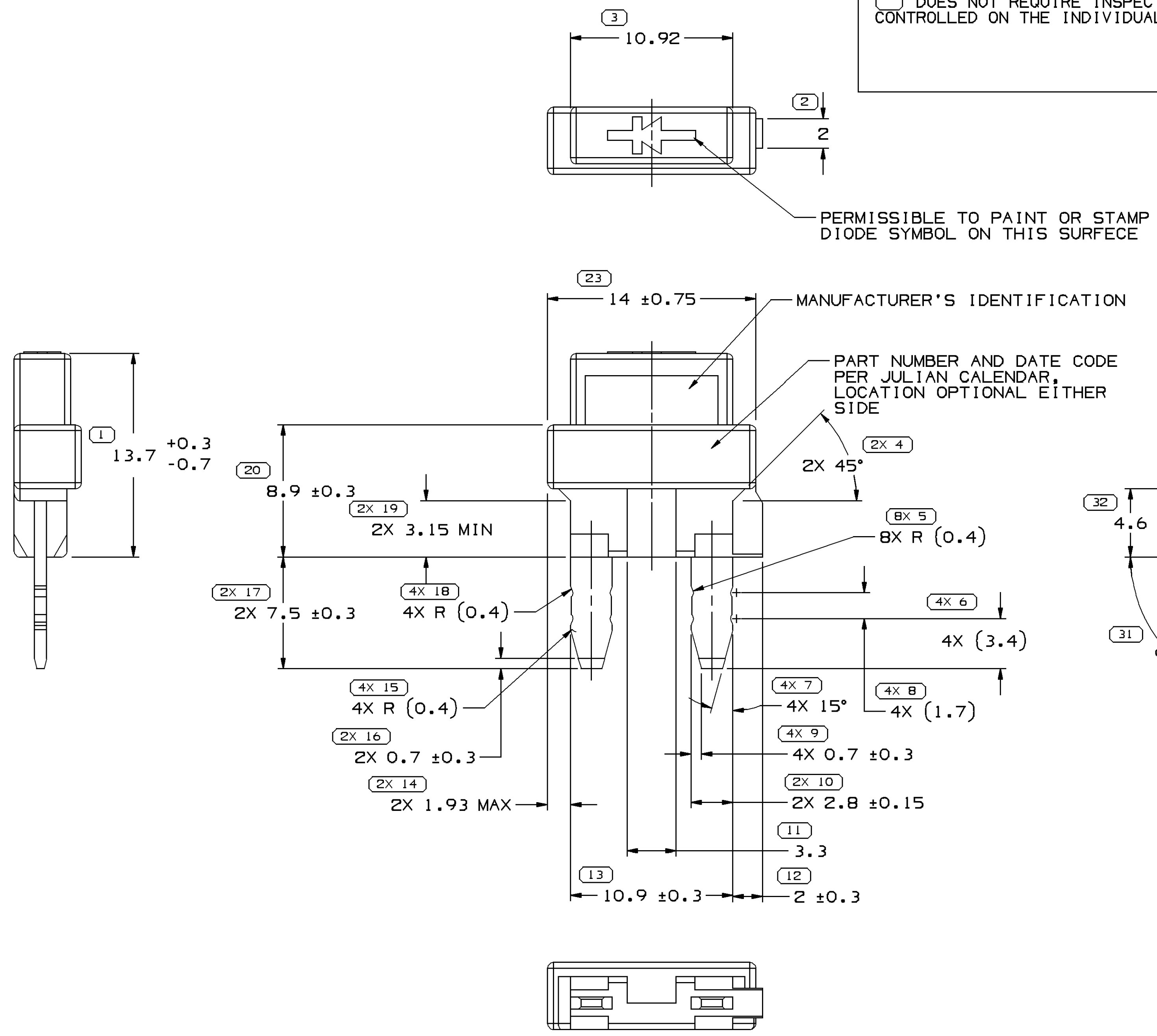


SYMBOL DEFINITION	
A DIMENSION WITHOUT AN INSPECTION REPORT SYMBOL  DOES NOT REQUIRE INSPECTION. IT MAY BE CONTROLLED ON THE INDIVIDUAL COMPONENT DRAWING.	TOTAL NO OF INSPECTIONS REQUIRED
	68
	LAST NO. USED
	33

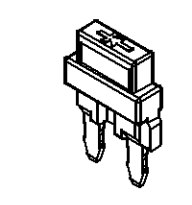
MISSING SYMBOLS	
	21-22

DWG STATUS				ZONE	REVISION HISTORY	AUTH	DR	APVD1	APVD2
DATE	STG	REV	N/P						
24JL02	R	09	AB	-	WAS ON TAXI 12135036, REMOVED OPTIONAL CONST., REVISED BLADES & REVISED NOTES	228101	EES	EES	LWN
23MY06	R	09	AC	-	REMOVED DIM 1.5 +/- .15/- .7, REVISED NOTES (2 PLCS) AND REVISED GRAPHICS	280948	SAB	SAB	GR
08DE06	R	09	AD	-	REVISED NOTE (1 PLC)	287570	EF5	RA0	GR



NOTES:

- DIODE RATING AND VALUE TO BE PER CHART. DIODE MUST BE FROM A DELPHI MECHATRONIC SYSTEMS APPROVED SUPPLIER.
- DIMENSIONS ARE SYMMETRICAL ABOUT CENTERLINES.
- EXPOSED SURFACES OF BLADE TO BE NICKEL/ZINC PLATED 0.00015 MIN THICKNESS. PLATING OF EDGES OPTIONAL. BLADE MATERIAL: 1008 1/2 HARD COLD ROLLED STEEL.
- MATES WITH TERMINAL 12092087 OR EQUIVALENT.
- DIODE CONFIGURATION TO BE AS SHOWN FOR CORRECT POLARITY AND WILL BE ASSURED BY INDEXING NOTCH.
- DIODE SHALL MEET REQUIREMENTS OF DIODE SPECIFICATION AED0502F-000.
- OPERATING TEMPERATURE RANGE TO BE -40°C TO +125°C
- UNLESS OTHERWISE SPECIFIED AND/OR INDICATED: DIMENSIONS ARE TO FACE OF VIEW SHOWN AND AUTOMATICALLY ROUNDED BY COMPUTER FOR INSPECTION. (SEE MATH MODEL FOR PRECISE DIMENSION) FOR ALL OTHER DIMENSIONS NOT SHOWN BUT REQUIRED FOR TOOL BUILD, SEE MATH MODEL FOR PRECISE TOOL PATH DATA.
- MAXIMUM BURR HEIGHT ON TERMINAL BLADES SHALL BE 0.003 INCHES, EXCEPT FOR COINED EDGES WHICH SHALL BE FREE OF BURRS.
- SCHEMATIC SYMBOL TO APPEAR ON TOP OF PART, MARKING MUST BE LEGIBLE, WHITE AGAINST A BLACK BACKGROUND AND MEET VISUAL PRODUCTS STANDARD REQUIREMENT VPS-BB2. NO MACHINE VISION SYSTEM APPLICATION.
- PLASTIC MATERIAL FOR DIODE ASSEMBLY IS POLYPROPYLENE OR NYLON. FOR MATERIAL SPECIFICATION, CONTACT DELPHI PACKARD ELECTRIC SYSTEMS.



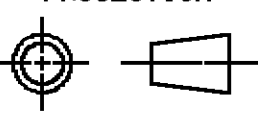
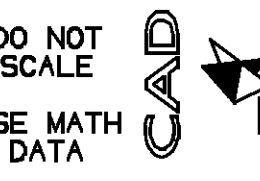

12135037	AED05020-100	1 AMP	400 V
ASM PART NO.	COMPONENT PART NO.	CURRENT RATING	P.I.V.

DIMENSIONAL RANGE (MM)		CHART ET	
FROM	TO	> 0	> 300
> 0	> 20	> 20	> 100
> 20	> 30	> 30	> 150
> 30	> 70	> 70	> 200
> 70	> 100	> 100	> 250
> 100	> 150	> 150	> 300
> 150	> 200	> 200	> 400
> 200	> 250	> 250	> 400
> 250	> 300	> 300	> 400
> 300	> 400	> 400	> 400

TOLERANCE UNLESS OTHERWISE SPECIFIED

±0.15	±0.2	±0.3	±0.4	±0.5	±0.6	±0.8	±1	±1.2
-------	------	------	------	------	------	------	----	------

ANGULAR TOLERANCE ±2°

DWG TYPE		PART DRAWING	
STYLE			
VOLUME (C/P)		DISTR CODE	
		D	
UNLESS OTHERWISE SPECIFIED			
THIS DOCUMENT IS IN ACCORDANCE WITH ASME Y14.5M-1994 AS AMENDED BY THE GM GLOBAL DIMENSIONING AND TOLERANCING ADDENDUM - 1997. ALL GEOMETRIC TOLERANCES AND RELATED DATUMS APPLY RFS. RULE #1 (PERFECT FORM AT MMC) DOES NOT APPLY WHEN RELATIONSHIP BETWEEN FEATURES IS ESTABLISHED BY ORIENTATION OR LOCATION TOLERANCES. SEPARATE POSITION CALLOUTS MAY BE GAGED SEPARATELY, REGARDLESS OF DATUM REFERENCE. ALL DIMENSIONS ARE IN MILLIMETERS			
REFERENCE			
THIRD ANGLE PROJECTION		DO NOT SCALE	
			
USE MATH DATA			

DELPHI			
DELPHI PACKARD ELECTRIC SYSTEMS WARREN, OH			
DR	DATE		
APVD1	E. SEIDEL	24JL02	
APVD2	E. SEIDEL	24JL02	
APVD3	L. NEAL	26JL02	
APVD4			
APVD5			
SUBSTANCES OF CONCERN AND RECYCLED CONTENT PER DELPHI 10945001			
MATERIAL SEE NOTE #3 & #6			
DRAWING NAME ASM ELECTRONIC ASM DIODE 280 MINI 1.0A			
DRAWING NUMBER 12135037			
SIZE	SCALE	FRAME NO	SHEET NO
A1	5:1	1 OF 1	1 OF 1
STG	REV	N/P	AD
R	09		