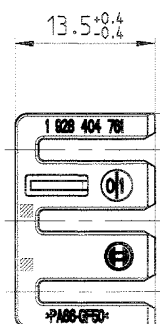
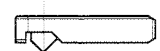
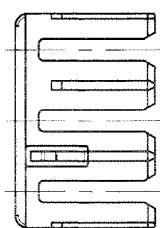
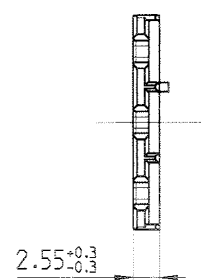


© THIS DRAWING IS THE EXCLUSIVE PROPERTY OF ROBERT BOSCH GMBH. WITHOUT THE WRITING IT MAY NOT BE REPRODUCED OR GIVEN TO THIRD PARTIES.

© Alle Rechte bei Robert Bosch GmbH, auch fuer den Fall von Schutzrechtsverletzungen, vorbehalten. Weitergabe, wie Kopie- und Weitergaberecht, ist untersagt.

Welt- freisdr. Angebotszeichnungen  
FURTHER FOREIGN LANGUAGE OFFER DWGS



20.7<sup>+0.3</sup>/<sub>-0.3</sub>  
1 mm Einfall zulaessig  
1 MM INCIDENCE PERMITTED

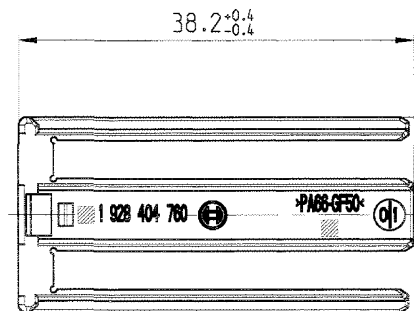
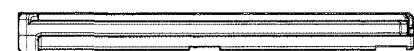
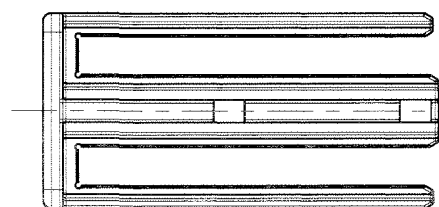
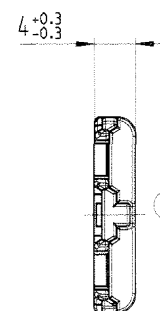
1:1



1:1



| Benennung<br>DESIGNATION                            | Bestell-Nr.<br>ORDER NUMBER | Material<br>MATERIAL | Farbe<br>COLOR |
|---|-----------------------------|----------------------|----------------|
| Sekundaerverriegelung 2.8mm<br>SECONDARY LOCK 2.8mm | 1 928 404 761               | PA66- GF50           | Lila<br>LILAC  |

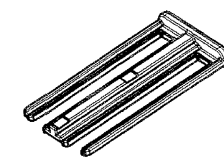


18.9<sup>+0.3</sup>/<sub>-0.3</sub>  
2 mm Einfall zulaessig  
2 MM INCIDENCE PERMITTED

1:1



1:1



| Benennung<br>DESIGNATION                            | Bestell-Nr.<br>ORDER NUMBER | Material<br>MATERIAL | Farbe<br>COLOR |
|---|-----------------------------|----------------------|----------------|
| Sekundaerverriegelung 1.2mm<br>SECONDARY LOCK 1.2mm | 1 928 404 760               | PA66- GF50           | Lila<br>LILAC  |

Teile koennen in nicht funktionsrelevanten Details von der Darstellung in dieser Zeichnung abweichen  
PARTS CAN BE DIFFERENT IN NON-FUNCTIONAL RELEVANT DETAILS FROM THIS DRAWING

|                                |  |       |  |          |              |            |  |
|--------------------------------|--|-------|--|----------|--------------|------------|--|
| AZ: 1 928 A00 133              |  | SZ: . | CAD-Original   | 05.05.04 | CAD-Lieferer | Nr.:43 391 | CAD-Part: 1928404760-762_gen.prt/761.prt               |
| Dokumententart / DOCUMENT TYPE |  |       | Nicht tol. Masse<br>NON TOLERANCED DIMENSIONS<br>± 1 mm, ± 2 |          | ISO E        |            | Massstab<br>SCALE                                      |
|                                |  |       |  |          |              |            | 2:1 (1:1)  |
|                                |  |       |  |          |              |            | Angebots-<br>zeichnung<br>OFFER<br>DRAWING             |
|                                |  |       |  |          |              |            | Benennung/<br>TITLE                                    |
|                                |  |       |  |          |              |            | Sekundaerverriegelungen 58-p.<br>SECONDARY LOCK 58-WAY |
|                                |  |       |  |          |              |            | Nr. / NO.  |
|                                |  |       |  |          |              |            | 1 928 A00 135  |
|                                |  |       |  |          |              |            | de/en  |
|                                |  |       |  |          |              |            | Blatt<br>SHEET 1                                       |
|                                |  |       |  |          |              |            | 1 Bl./SH   |
|                                |  |       |  |          |              |            | Ers.f. / REPLACES                                      |
|                                |  |       |  |          |              |            | Ers.d. / REPLAC.BY                                     |
|                                |  |       |  |          |              |            | Ausfuellanleitung N12A D11/1 beachten!                 |

OBSEVE INSTRUCTIONS FOR FILLING OUT M2A 01/17