

PLEASE CHECK WWW.MOLEX.COM FOR LATEST PART INFORMATION

Part Number: **0643251358**
Status: **Active**
Overview: CMC and CMX Sealed, Hybrid, Modular Connectors
Description: Single Wire Seals for CP 2.80 Terminals, Gray

Documents:

Drawing (PDF)	Application Specification AS-98420-001-FR-001 (PDF)
Product Specification 643270001-PS-000 (PDF)	Application Specification AS-98420-001-SP-001 (PDF)
Application Specification AS-64318-002-001 (PDF)	Application Specification AS-98420-003-001 (PDF)
Application Specification AS-64318-002-CH-001 (PDF)	Application Specification AS-98420-003-CH-001 (PDF)
Application Specification AS-64318-002-FR-001 (PDF)	Application Specification AS-98420-003-FR-001 (PDF)
Application Specification AS-64318-002-SP-001 (PDF)	Application Specification AS-98967-001-001 (PDF)
Application Specification AS-64327-001-001 (PDF)	Datasheet (PDF)
Application Specification AS-98420-001-001 (PDF)	RoHS Certificate of Compliance (PDF)
Application Specification AS-98420-001-CH-001 (PDF)	

General

Product Family	Accessories
Series	64325
Application	Automotive
Component Type	Wire Seal
Overview	CMC and CMX Sealed, Hybrid, Modular Connectors
Product Name	CMC
UPC	884982286047

Physical

Circuits (Loaded)	0
Circuits (maximum)	0
Color - Resin	Gray
Net Weight	0.141/g
Packaging Type	Carton

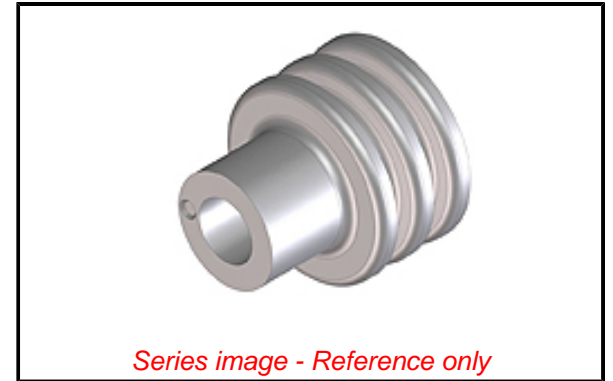
Solder Process Data

Lead-freeProcess Capability	N/A
-----------------------------	-----

Material Info

Reference - Drawing Numbers

Application Specification	AS-64318-002-001, AS-64318-002-CH-001, AS-64318-002-FR-001, AS-64318-002-SP-001, AS-64327-001-001, AS-98420-001-001, AS-98420-001-CH-001, AS-98420-001-FR-001, AS-98420-001-SP-001, AS-98420-003-001, AS-98420-003-CH-001, AS-98420-003-FR-001, AS-98967-001-001
Product Specification	643270001-PS-000
Sales Drawing	SD-31301-053-001, SD-64325-006-001



EU ELV
Compliant

EU RoHS
Compliant

REACH SVHC

Not Contained Per -
D(2021)4569-DC (8
July 2021)

Halogen-Free
Status

Low-Halogen

For more information, please visit [Contact US](#)

China ROHS

ELV

RoHS Phthalates

China RoHS

Green Image

Compliant

Not Contained

Search Parts in this Series

[64325](#) Series

Use With

[64324](#) CMC CP Terminals