

CRITCHLEY 9000

ISSUE C - 18/03/98

Critchley Components Limited

PO Box 246

Queens Drive Industrial Estate

Nottingham NG2 1NQ

United Kingdom

Tel: +44 (0) 115 986 1126

Fax: +44 (0) 115 986 0563

A compact encapsulated line isolating transformer, BABT, UL and BSi certified. Tested and approved in accordance with the requirements of EN41003: 1997, EN60950: 1992 (IEC950), EN60065: 1994 and AS/NZS 3260:1993 (BSi Certificate Nos. 7082 and 7456), UL1459, UL1950 and CAN/CSA 234-M90 (E171368 [M]).

ELECTRICAL SPECIFICATION

DC Resistance:

Primary	70.4Ω ± 15%
Secondary	70.4Ω ± 15%

Series O/C Inductance:
measured @ 250mV

200Hz	>2.0H
2000Hz	>0.6H
4000Hz	>0.4H

Series O/C AC Resistance:
measured @ 250mV

200Hz	>1.5KΩ
2000Hz	>7.8KΩ
4000Hz	>11.2KΩ

Leakage Inductance:
200Hz - 4000Hz

19mH max.

Harmonic Distortion:
200Hz, -3dBm on primary,
600Ω load on secondary.

2f: -72dB max.
3f: -65dB max.
TDdBm: -65dBm max.

Insertion Loss:
200Hz - 4000Hz
(600Ω ref., 600Ω load)

1.5dB max.

Frequency Response:
200Hz - 4000Hz
(600Ω ref., 600Ω load)

± 0.3dB max.

Return Loss:
300Hz - 4000Hz

>22dB (when using
recommended circuit).

Max. DC current

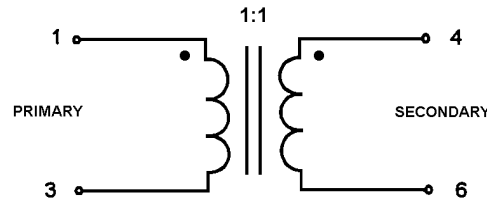
0mA

ENVIRONMENTAL & SAFETY SPECIFICATION

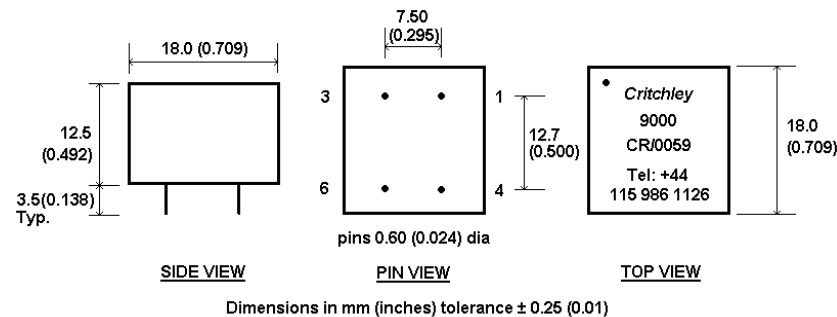
Voltage Breakdown: Tested according to EN60950 part 5.3.2. (test voltage: 3000 Volts).

Storage temperature: Tested to IEC 68-2-14:1984 test procedure Nb. (temperature range -25°C to +85°C).

CIRCUIT SCHEMATIC



MECHANICAL SPECIFICATION

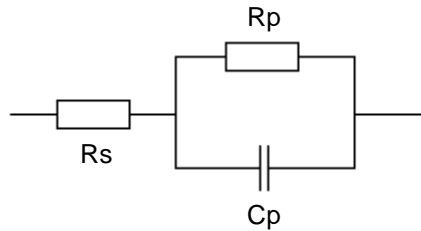


As this product is covered by a BABT Certificate of Recognition (CR0059) approvals time will be reduced.

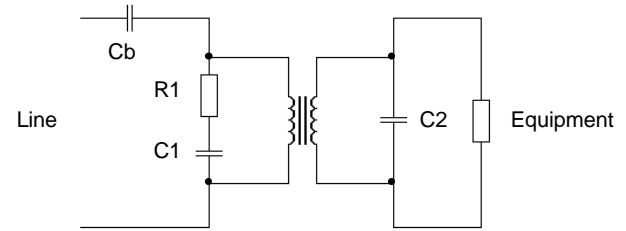


Application Circuits

Reference Impedance (ETS300 001):



Circuit description:



Country	Ref. Impedance Values			Recommended Circuit Values				
	R_s (Ω)	R_p (Ω)	C_p (nF)	C_b (μF)	R_1 (Ω)	C_1 (nF)	C_2 (nF)	Equipment (Ω)
UK, New Zealand	370	620	310	2.2	*561	100	33	*953
Germany, Switzerland	220	820	115	2.2	150	68	22	910
Australia	220	820	120	2.2	330	68	22	910
Sweden, Pan European (TBR 21)	270	750	150	3.3	220	68	18	910
Norway	120	820	110	3.3	150	100	22	910
Austria, Belgium, Canada, France, Finland, Hong Kong, Ireland, Italy, Japan, Netherlands, Portugal, Singapore, Taiwan, USA, Spain, Denmark	600 Ω			6.8	-	15	43	*604

Notes: *E96 series resistor values.

Country reference networks are subject to change and interpretation. The above is intended as an initial reference and should you require more information for a network not shown please contact your local sales office. Software models are available on disk for all components.