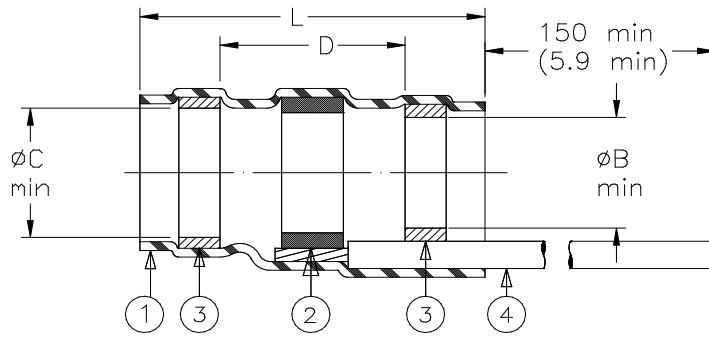


## CUSTOMER DRAWING



Part Name	Component Dimensions					Shall Accommodate Cable With Dimensions		
	Ident. Code	L±1.75 (L±0.07)	B min	C min	D min	E max	F min	H max
ST63-1-55-GA-CL	ST631R	16.5 (0.650)	1.9 (0.075)	2.65 (0.105)	8.25 (0.325)	2.65 (0.105)	0.90 (0.035)	1.9 (0.075)
ST63-2-55-GA-CL	ST632R	16.5 (0.650)	2.65 (0.105)	3.68 (0.145)	8.25 (0.325)	3.68 (0.145)	1.40 (0.055)	2.65 (0.105)
ST63-3-55-GA-CL	ST633R	16.5 (0.650)	4.3 (0.170)	5.08 (0.200)	8.25 (0.325)	5.08 (0.200)	2.15 (0.085)	4.3 (0.170)
ST63-4-55-GA-CL	ST634R	19.1 (0.750)	5.95 (0.235)	6.45 (0.255)	8.25 (0.325)	6.45 (0.255)	3.30 (0.130)	5.95 (0.235)
ST63-5-55-GA-CL	ST635R	19.1 (0.750)	7.0 (0.275)	7.6 (0.300)	8.25 (0.325)	7.6 (0.300)	4.30 (0.170)	7.0 (0.275)

### MATERIAL

- INSULATION SLEEVE:** Heat-shrinkable, radiation cross-linked modified polyvinylidene fluoride. Transparent blue.
- SOLDER PREFORM WITH FLUX:**  
 SOLDER: TYPE Sn63 per ANSI J-STD-006.  
 FLUX: TYPE ROLO per ANSI J-STD-004.
- MELTABLE RINGS:** Stabilized thermoplastic. Color: blue.
- PRE-INSTALLED LEAD:** RAYCHEM 55A0111 in accordance with MIL-W-22759/32. Stranded tin plated copper.  
 Color: (see note).

### APPLICATION

- These parts are designed to provide an environment protected shield termination on cables, rated for 125°C minimum, meeting the dimensional criteria listed and having tin or silver plated shields.
- Temperature range: -55°C to +150°C.
- When installed in accordance with Raychem Process Standard RCPS-100-70 assemblies will meet performance requirements of Raychem Specification RT-1404.

Complete part number is defined as shown:

ST63-X                      55                      GA                      CL

└─ Size                      └─ Lead type                      └─ Lead                      AWG                      └─ Lead color designation per MIL-STD-681.

1 to 5                      M22759/32                      20                      22                      Colors available:

24                      26                      20AWG-black, green, white

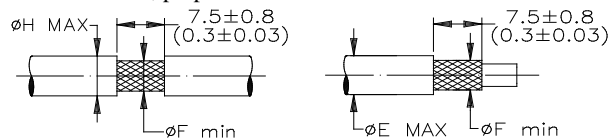
22AWG-black, green, white

24AWG-black, blue, white

26AWG-black, white

All gauges: White with a single black stripe.

For best results, prepare the cable as shown:



TE Connectivity, TE connectivity (logo), Raychem, and SolderSleeve are trademarks

		Raychem Devices	<b>TITLE:    SOLDERSLLEEVE* DEVICE TERMINATION WITH LEADS</b>				
UNLESS OTHERWISE SPECIFIED DIMENSIONS ARE IN MILLIMETERS. INCHES DIMENSIONS ARE BETWEEN BRACKETS.			DOCUMENT NO.: <b>ST63-X-55-GA-CL</b>				
TOLERANCES: 0.00 N/A 0.0 N/A 0 N/A	ANGLES: N/A  ROUGHNESS IN MICRON	TE Connectivity reserves the right to amend this drawing at any time. Users should evaluate the suitability of the product for their application.		Revision: <b>F</b>		Issue Date: July 2020	
DRAWN BY: R. MAPALO	DRAWN DATE: 08/12/1998	CAD FILE: ST63-X-55-GA-CL	CAGE CODE: 06090	ECO: ECO-20-009992	SCALE: NONE	SIZE: A	SHEET: 1 of 1

© 2020 TE Connectivity Corporation. All rights reserved.

If this document is printed it becomes uncontrolled. Check for the latest revision.