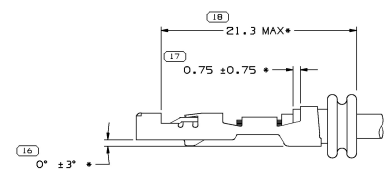
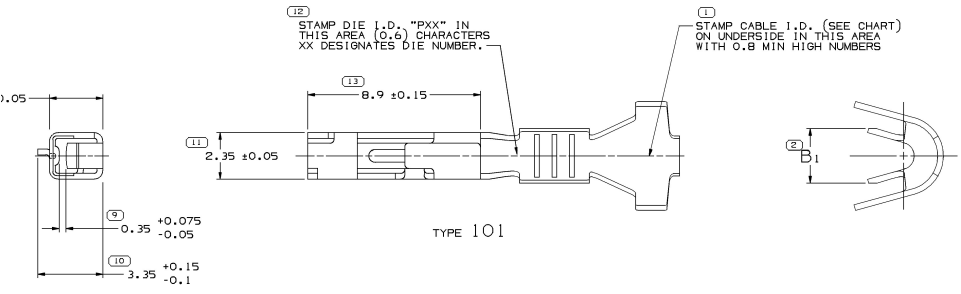
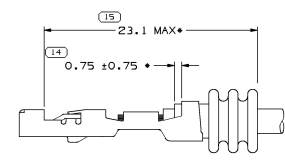
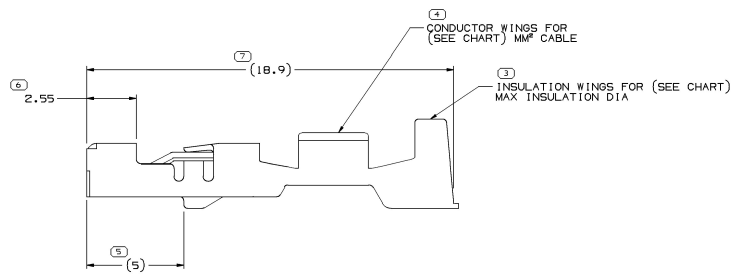


SYMBOL DEFINITION		MISSING SYMBOLS	
A DIMENSION WITHOUT AN INSPECTION REPORT SYMBOL \square DOES NOT REQUIRE INSPECTION. IT MAY BE CONTROLLED ON THE INDIVIDUAL COMPONENT DRAWING.	TOTAL NO OF INSPECTIONS REQUIRED	NO MISSING SYMBOL NUMBER	
	18		
	LAST NO. USED		
	18		

DATE		REV		INP		CHK		ZONE		REVISION HISTORY		AUT	
30JUL02	R	01	-	-	-	-	-	-	-	-	CLEARED REVISION COLUMN: ALL PARTS - REBRAIN TO P3 & UPDATED POM ATTRIBUTES	226	
12SEP03	R	02	-	-	-	-	-	-	-	-	REVISED GRAPHICS	241	
17SEP03	R	03	-	-	-	-	-	-	-	-	15326266 - UPDATED POM ATTRIBUTES	245	
24OCT03	R	04	-	-	-	-	-	-	-	-	UPDATED TERMINAL LEVEL IN CHART.	246	
16AUG04	R	05	-	-	-	-	-	-	-	-	ADDED TERMINAL I.D. NOTE: REMOVED "PXX" FROM GRAPHICS	258	
16MAY05	R	06	-	-	-	-	-	-	-	-	ALL PARTS - ADDED 3 COLUMNS TO CHART	268	
05NOV08	R	07	-	-	-	-	-	-	-	-	ALL PARTS - UPDATED POM ATTRIBUTES	406	
16MAY10	R	08	-	-	-	-	-	-	-	-	ALL PARTS - UPDATED POM ATTRIBUTES	410	
04AUG10	R	09	-	-	-	-	-	-	-	-	ALL PARTS - ADDED PLATING NOTE, UPDATED MAT'L CALLOUT AND ADDED CONTACT AREA & CRIMP AREA COLUMNS ON CHART	414	
30SEP10	R	10	-	-	-	-	-	-	-	-	ALL PARTS - UPDATED PLATING NOTE	412	
23MAY11	R	11	-	-	-	-	-	-	-	-	ALL PARTS - ADDED "PREFERRED MAT'L SIZE" COLUMN	414	



2 RIB SEAL POSITION REF AND TERMINAL/CABLE ALIGNMENT
SCALE 5:1



3 RIB SEAL POSITION REF
SCALE 5:1

- NOTES
- UNLESS OTHERWISE SPECIFIED AND/OR INDICATED: DIMENSIONS ARE TO FACE OF VIEW SHOWN AND AUTOMATICALLY ROUNDED BY COMPUTER FOR INSPECTION. (SEE MATH MODEL FOR PRECISE DIMENSIONS.) FOR ALL OTHER DIMENSIONS NOT SHOWN BUT REQUIRED FOR TOOL BUILD, SEE MATH MODEL FOR PRECISE TOOL PATH DATA.
 - REFERENCE MATING COMPONENTS OR EQUIVALENT: TERMINAL - 15304706
 - * DENOTES DIMENSIONS MADE AT CUT-OFF AND CRIMP DIE.
 - DO NOT PROBE, TEST OR OTHERWISE CONTACT THE INTERIOR REGION (THE SPRING OR ANY MOVING PART) OF THIS TERMINAL. SEVERE DAMAGE CAN OCCUR, COMPROMISING THE PERFORMANCE OF THE ELECTRICAL INTERFACE.
 - PLATING TYPE:
 - REFLOW TIN 1.9-3.3 MICROMETERS THICK WITH A COPPER UNDERPLATE 0.5 MICROMETER TO 1.0 MICROMETER THICK.

PLATING TYPE INFORMATION SHOWN ABOVE IS REFERENCE ONLY. PLATING REQUIREMENTS ARE CONTAINED IN APPLICABLE MATERIAL SPECIFICATION.

REV	N/P	STATUS	PREFERRED MAT'L SIZE	ALTERNATIVE MAT'L SIZE	MAT'L DESCRIPTION	SIZE (MM²)	ID	DIA	TYPE	APP	APPL	APPL	APPL	APPL	APPL	APPL	APPL	APPL
07	04	A6	-	0.3 X 26.71	0.3 X 27.38	COPPER ALLOY	0.75 - 0.8	18	2.02 - 1.7	101	2.65	SEALED (MINI)	15305351	3.2 X 4 OVAL	I	I		
06	04	A6	-	0.3 X 26.71	0.3 X 27.38	COPPER ALLOY	0.35 - 0.5	21	1.85 - 1.2	101	2.1	SEALED (MINI)	15366022	3.2 X 4 OVAL	I	I		
05	04	A6	-	0.3 X 26.71	0.3 X 27.38	COPPER ALLOY	0.75 - 1	17	2.25 - 1.7	101	2.65	SEALED (GT)	15366060	Ø 4 ROUND	I	I		
04	04	A6	-	0.3 X 26.71	0.3 X 27.38	COPPER ALLOY	0.35 - 0.5	21	1.85 - 1.2	101	2.1	SEALED (GT)	15366021	Ø 4 ROUND	I	I		

(2) PROCESS SENSITIVE DIMENSION: DIMENSIONING ENCLOSED IN () INDICATE REFERENCE DIMENSIONS AND NO TOLERANCE LIMITS ARE ESTABLISHED.

THIRD ANGLE PROJECTION

DO NOT SCALE

USE MATH DATA

ALL DIMENSIONS ARE IN MILLIMETERS

DATE: 10/11/11

SCALE: 10:1

SHEET: 1 OF 2

TAXI TERM F 0T 150

1219181

DELPHI

DELPHI PACKAGED ELECTRICAL/ELECTRONIC HARDWARE

DR: H. CASTRILLON

APR03: ECU, KUPKA

APR03: S. G. LESLIE

APR04

UNLESS OTHERWISE SPECIFIED, THIS DRAWING IS IN ACCORDANCE WITH THE DELPHI DRAWING AND DIMENSIONING STANDARDS. DIMENSIONS ARE IN MILLIMETERS UNLESS OTHERWISE SPECIFIED. DIMENSIONS ARE TO FACE UNLESS OTHERWISE SPECIFIED.

SUBSTANCES OF CONCERN AND CONTENT PER DELPHI 1024

SEE CHART